

DISCLAIMER:

The Nebraska Lied Main Street Program provides this nominal charge design assistance to property owners in officially designated Main Street project areas. The renderings and notations on these sheets are only conceptual views of the project site and are based on the information supplied to the design staff. Should obscured architectural details or problems be revealed, the local Main Street manager should be notified and consulted. General notes are provided as a guideline for preservation and revitalization techniques and are generally based on the Secretary of the Department of Interior's Standards for Historic Preservation. A copy of this publication may be viewed at the local project manager's office. For further information regarding incentive tax credits or issues regarding clarification of the Secretary of the Interior's Standards call the Nebraska State Historic Preservation Office of the Nebraska Historical Society. For more detailed technical assistance of product information, the state Main Street office has compiled lists of architects, engineers, preservation consultants, contractors, and product manufacturers who have expressed an interest in the Main Street Program. Since the Nebraska Lied Main Street Program is unable to endorse these entities, it is recommended that the building owners thoroughly check all references before engaging such contacts. These resource lists may be obtained through the local community manager's office. The work here takes no specific consideration of local building codes, fire ordinances, municipal zoning codes, and items relevant to the federal "Americans with Disabilities Act." Wherever pertinent these regulations always will supercede the intentions of the conceptual proposal illustrated here. Where applicable, all work must be approved by the local Main Street design review committee.



Image 1 (left). Existing condition of East Facade.



Image 2 (below). Existing condition of South Facade.



Image 3. Option 1 (east). New windows are installed in the upper story, and all window frames are painted dark gray. The store sign is a stencil in white applied to the lower windows. Awnings in Sunbrella "Black" (#4608) are added above the lower windows and doors.



Image 4. Option 1 (south). New windows are installed on the South facade windows as well. All window panes are painted dark gray. The wooden filler surrounding the air conditioning unit is painted tan to blend into the brick facade. Awnings in Sunbrella "Black" (#4608) are added above the lower windows and door. A window stencil sign in white is applied to the window of the front store. The signs for the other businesses are applied to the valences of the awnings. **Image 5 (right).** Subrella fabric sample in "Black" (#4608)



created by:
NELMS
 Nebraska Lied
 Main Street
 •
 University of
 Nebraska
 College of
 Architecture

Design assistance for:
Le Sueur Building
Jeff Bush
 11th & Illinois Streets
 Sidney, NE

Produced under the direction of:
Nebraska Lied Main Street
 P.O. Box 83107
 Lincoln, 68501-3107
 Phone: 402.323.7337 Fax: 402.323.7349

Project Code:
SDY0603
 Date:
10 AUG 2006

Sheet No.:
1 / 3

DISCLAIMER :

The Nebraska Lied Main Street Program provides this nominal charge design assistance to property owners in officially designated Main Street project areas. The renderings and notations on these sheets are only conceptual views of the project site and are based on the information supplied to the design staff. Should obscured architectural details or problems be revealed, the local Main Street manager should be notified and consulted. General notes are provided as a guideline for preservation and revitalization techniques and are generally based on the Secretary of the Department of Interior's Standards for Historic Preservation. A copy of this publication may be viewed at the local project manager's office. For further information regarding incentive tax credits or issues regarding clarification of the Secretary of the Interior's Standards call the Nebraska State Historic Preservation Office of the Nebraska Historical Society. For more detailed technical assistance of product information, the state Main Street office has compiled lists of architects, engineers, preservation consultants, contractors, and product manufacturers who have expressed an interest in the Main Street Program. Since the Nebraska Lied Main Street Program is unable to endorse these entities, it is recommended that the building owners thoroughly check all references before engaging such contacts. These resource lists may be obtained through the local community manager's office. The work here takes no specific consideration of local building codes, fire ordinances, municipal zoning codes, and items relevant to the federal "Americans with Disabilities Act." Wherever pertinent these regulations always will supercede the intentions of the conceptual proposal illustrated here. Where applicable, all work must be approved by the local Main Street design review committee.



Image 6. Option 2 (east). The windows and window frames have been updated as in Option 1. Awnings in Sunbrella "Marine Blue" (#4678) to all windows and doors. Store signs are applied in white to the lower canopies.



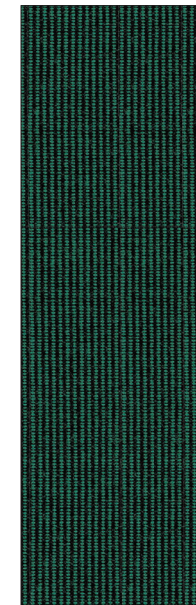
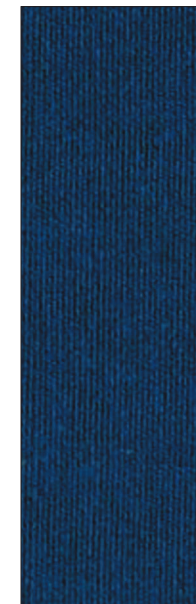
Image 9. Option 3 (east). The same changes to the windows are made as in Options 1 and 2. Awnings in Sunbrella "Hemlock Tweed" (#4605) are added to both stories. The store signs are applied to the awning tops in white.



Image 7. Option 2 (south). The windows and window frames have been updated as in Option 1. Awnings in Sunbrella "Marine Blue" have been added to both stories. The signs for the businesses are applied to the awnings in white. **Image 8 (right).** Sunbrella fabric sample in "Marine Blue" (#4678).



Image 10. Option 3 (south) The same changes as in Options 2 and 3 are made. Awnings in Sunbrella "Hemlock Tweed" (# 4605) are added to both stories. The store signs are applied in white to the awnings. **Image 11 (right).** Sunbrella fabric sample in "Hemlock Tweed" (#4605).



created by:
NELMS
 Nebraska Lied
 Main Street
 •
 University of
 Nebraska
 College of
 Architecture

Design assistance for:
Le Sueur Building
Jeff Bush
 11th & Illinois Streets
 Sidney, NE

Produced under the direction of:
Nebraska Lied Main Street
 P.O. Box 83107
 Lincoln, 68501-3107
 Phone: 402.323.7337 Fax: 402.323.7349

Project Code:
SDY0603
 Date:
10 AUG 2006

Sheet No.:
2 / 3

DISCLAIMER:

The Nebraska Lied Main Street Program provides this nominal charge design assistance to property owners in officially designated Main Street project areas. The renderings and notations on these sheets are only conceptual views of the project site and are based on the information supplied to the design staff. Should obscured architectural details or problems be revealed, the local Main Street manager should be notified and consulted. General notes are provided as a guideline for preservation and revitalization techniques and are generally based on the Secretary of the Department of Interior's Standards for Historic Preservation. A copy of this publication may be viewed at the local project manager's office. For further information regarding incentive tax credits or issues regarding clarification of the Secretary of the Interior's Standards call the Nebraska State Historic Preservation Office of the Nebraska Historical Society. For more detailed technical assistance of product information, the state Main Street office has compiled lists of architects, engineers, preservation consultants, contractors, and product manufacturers who have expressed an interest in the Main Street Program. Since the Nebraska Lied Main Street Program is unable to endorse these entities, it is recommended that the building owners thoroughly check all references before engaging such contacts. These resource lists may be obtained through the local community manager's office. The work here takes no specific consideration of local building codes, fire ordinances, municipal zoning codes, and items relevant to the federal "Americans with Disabilities Act." Wherever pertinent these regulations always will supercede the intentions of the conceptual proposal illustrated here. Where applicable, all work must be approved by the local Main Street design review committee.



Image 12. Option 4 (east). The same changes as in Options 1 through 3 are made here, except the window frames are painted dark brown. Awnings in Sunbrella "True Brown" (#4621) are added. Sign boards, with dark brown and light brown paint, are attached to the building on either side of the main entrance.



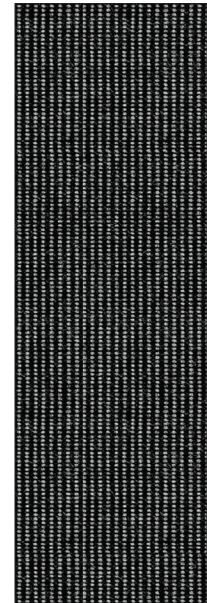
Image 15. Option 5 (east). The same changes as in Options 1 through 4 are made here. Awnings in Sunbrella "Charcoal Tweed" (#4607) are added. Sign boards, with dark gray and light gray paint, are attached to the building on either side of the main entrance.



Image 13. Option 4 (south). The same changes are made as in Options 1 through 3, except the window frames are painted dark brown here. Awnings in Sunbrella "True Brown" (#4621) are added. The signs for the businesses are apliqued in white to the awning valences. **Image 14 (right).** Sunbrella fabric sample in "True Brown" (#4621).



Image 16. Option 5 (south). The same changes as in Options 1 through 4 are made here. Awnings in Sunbrella "Charcoal Tweed" (#4607) are added. The store signs are apliqued to the awning valences in white. **Image 17 (right).** Sunbrella fabric sample in "Charcoal Tweed" (#4607).



Design assistance for:
Le Sueur Building
Jeff Bush
 11th & Illinois Streets
 Sidney, NE

Produced under the direction of:
Nebraska Lied Main Street
 P.O. Box 83107
 Lincoln, 68501-3107
 Phone: 402.323.7337 Fax: 402.323.7349

Project Code:
SDY0603
 Date:
10 AUG 2006

Sheet No.:
3 / 3