

**DISCLAIMER:**

The Nebraska Lied Main Street Program provides this nominal charge design assistance to property owners in officially designated Main Street project areas. The renderings and notations on these sheets are only conceptual views of the project site and are based on the information supplied to the design staff. Should obscured architectural details or problems be revealed, the local Main Street manager should be notified and consulted. General notes are provided as a guideline for preservation and revitalization techniques and are generally based on the Secretary of the Department of Interior's Standards for Historic Preservation. A copy of this publication may be viewed at the local project manager's office. For further information regarding incentive tax credits or issues regarding clarification of the Secretary of the Interior's Standards call the Nebraska State Historic Preservation Office of the Nebraska Historical Society. For more detailed technical assistance of product information, the state Main Street office has compiled lists of architects, engineers, preservation consultants, contractors, and product manufacturers who have expressed an interest in the Main Street Program. Since the Nebraska Lied Main Street Program is unable to endorse these entities, it is recommended that the building owners thoroughly check all references before engaging such contacts. These resource lists may be obtained through the local community manager's office. The work here takes no specific consideration of local building codes, fire ordinances, municipal zoning codes, and items relevant to the federal "Americans with Disabilities Act." Wherever pertinent these regulations always will supercede the intentions of the conceptual proposal illustrated here. Where applicable, all work must be approved by the local Main Street design review committee.



**Image 1: Existing condition.** Ribbed metal siding covers the top portion of the front facade. The glass front door has been modified with a metal panel and mail drop slot on the lower half.



**Image 2: Option 1.** One continuous, "eyebrow" awning in Sunbrella fabric Mocha (4616) is centered above the two windows and door. The awning is composed of a single angled plane and is placed just below the metal siding. Its bottom edge ends just above the top of the front door. The door frame and the metal siding are painted an off-white color. Logos have been applied to the windows in the same off-white color. The full-height glass in the front door is restored.

**Image 3: Option 2.** The awning composition is the same as in Option 1 and is in Sunbrella fabric Linen Tweed (4654). The metal siding and door frame are painted off-white, and the window logos are in a similar color.



**Image 4: Option 3.** The same awning composition is seen here as in Options 1 and 2. The awning is in Sunbrella fabric Walnut Brown Tweed (4618). The metal siding, door frame, and window logos are all shown in a taupe color.



created by:  
**NELMS**  
 Nebraska Lied  
 Main Street  
 •  
 University of  
 Nebraska  
 College of  
 Architecture

Design assistance for:  
**Still Point Healing Arts**  
**Sally Knudsen**  
 114 E 6th St.  
 Lexington, NE 68850

Produced under the direction of:  
**Nebraska Lied Main Street**  
 P.O. Box 83107  
 Lincoln, 68501-3107  
 Phone: 402.323.7337 Fax: 402.323.7349

Project Code:  
**LXN0601**  
 Date:  
**13 NOV 2006**

Sheet No.:  
**1 / 5**

**DISCLAIMER:**

The Nebraska Lied Main Street Program provides this nominal charge design assistance to property owners in officially designated Main Street project areas. The renderings and notations on these sheets are only conceptual views of the project site and are based on the information supplied to the design staff. Should obscured architectural details or problems be revealed, the local Main Street manager should be notified and consulted. General notes are provided as a guideline for preservation and revitalization techniques and are generally based on the Secretary of the Department of Interior's Standards for Historic Preservation. A copy of this publication may be viewed at the local project manager's office. For further information regarding incentive tax credits or issues regarding clarification of the Secretary of the Interior's Standards call the Nebraska State Historic Preservation Office of the Nebraska Historical Society. For more detailed technical assistance of product information, the state Main Street office has compiled lists of architects, engineers, preservation consultants, contractors, and product manufacturers who have expressed an interest in the Main Street Program. Since the Nebraska Lied Main Street Program is unable to endorse these entities, it is recommended that the building owners thoroughly check all references before engaging such contacts. These resource lists may be obtained through the local community manager's office. The work here takes no specific consideration of local building codes, fire ordinances, municipal zoning codes, and items relevant to the federal "Americans with Disabilities Act." Wherever pertinent these regulations always will supercede the intentions of the conceptual proposal illustrated here. Where applicable, all work must be approved by the local Main Street design review committee.



**Image 5: Option 4.** The metal siding is removed from the facade in Options 1 through 9. One continuous awning in Sunbrella fabric Mocha (4616) is centered across the facade. Business logos are applied to both front windows.

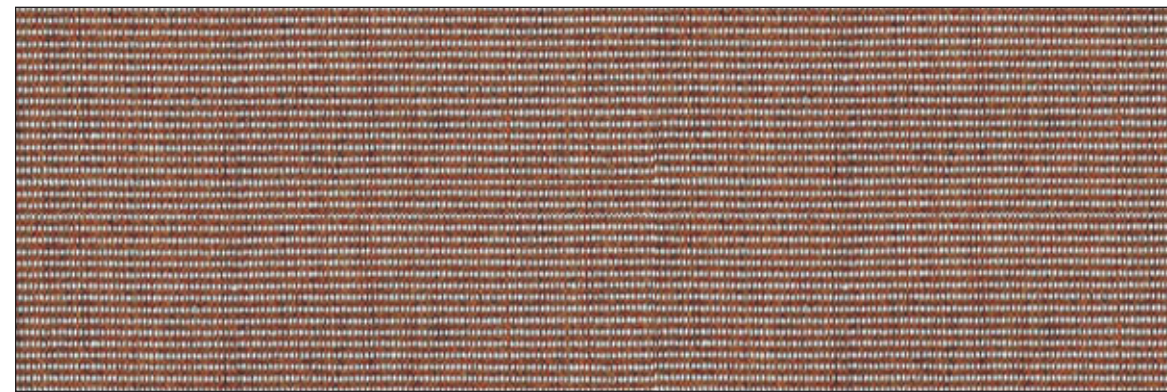


**Image 6: Option 5.** Three separate awnings in Sunbrella fabric Mocha (4616) are centered above the windows and door. Signage for the two windows is the same as in Option 1. A smaller Still Point logo is applied to the top half of the door glass.



**Image 7 (left): Option 6.** A single awning in Sunbrella fabric Mocha (4616) is centered above the front door. The Still Point logo is applied to the two front windows.

**Image 8 (below): Awning Fabric.** Mocha (4616).



created by:  
**NELMS**  
 Nebraska Lied  
 Main Street  
 •  
 University of  
 Nebraska  
 College of  
 Architecture

Design assistance for:  
**Still Point Healing Arts**  
**Sally Knudsen**  
 114 E 6th St.  
 Lexington, NE 68850

Produced under the direction of:  
**Nebraska Lied Main Street**  
 P.O. Box 83107  
 Lincoln, 68501-3107  
 Phone: 402.323.7337 Fax: 402.323.7349

Project Code:  
**LXN0601**  
 Date:  
**13 NOV 2006**

Sheet No.:  
**2 / 5**

**DISCLAIMER:**

The Nebraska Lied Main Street Program provides this nominal charge design assistance to property owners in officially designated Main Street project areas. The renderings and notations on these sheets are only conceptual views of the project site and are based on the information supplied to the design staff. Should obscured architectural details or problems be revealed, the local Main Street manager should be notified and consulted. General notes are provided as a guideline for preservation and revitalization techniques and are generally based on the Secretary of the Department of Interior's Standards for Historic Preservation. A copy of this publication may be viewed at the local project manager's office. For further information regarding incentive tax credits or issues regarding clarification of the Secretary of the Interior's Standards call the Nebraska State Historic Preservation Office of the Nebraska Historical Society. For more detailed technical assistance of product information, the state Main Street office has compiled lists of architects, engineers, preservation consultants, contractors, and product manufacturers who have expressed an interest in the Main Street Program. Since the Nebraska Lied Main Street Program is unable to endorse these entities, it is recommended that the building owners thoroughly check all references before engaging such contacts. These resource lists may be obtained through the local community manager's office. The work here takes no specific consideration of local building codes, fire ordinances, municipal zoning codes, and items relevant to the federal "Americans with Disabilities Act." Wherever pertinent these regulations always will supercede the intentions of the conceptual proposal illustrated here. Where applicable, all work must be approved by the local Main Street design review committee.



**Image 9: Option 7.** One continuous awning in Sunbrella fabric Linen Tweed (4654) is centered above the front windows and door. The awning is composed of a single plane; it has no sides or valance. The Still Point logo is applied to the two windows and to the top of the door glass. Two concrete benches are on either the concrete platforms that flank the door.



**Image 10: Option 8.** Three separate awnings in Sunbrella fabric Linen Tweed (4654) are centered above the windows and door. As with Option 4, these awnings have no sides or valances. Still Point logos are applied to the windows and front door glass. Concrete benches flank the front door.

**Image 11 (left): Option 9.** A single awning in Sunbrella fabric Linen Tweed (4654) is centered above the door. As in Options 4 and 5, this awning has no sides nor a valance. Still Point logos are applied to the front windows and door glass. Concrete benches are placed in front of the windows.

**Image 12 (below): Awning Fabric.** Linen Tweed (4654).



Design assistance for:  
**Still Point Healing Arts**  
**Sally Knudsen**  
 114 E 6th St.  
 Lexington, NE 68850

Produced under the direction of:  
**Nebraska Lied Main Street**  
 P.O. Box 83107  
 Lincoln, 68501-3107  
 Phone: 402.323.7337 Fax: 402.323.7349

Project Code:  
**LXN0601**  
 Date:  
**13 NOV 2006**

Sheet No.:  
**3 / 5**

**DISCLAIMER :**

The Nebraska Lied Main Street Program provides this nominal charge design assistance to property owners in officially designated Main Street project areas. The renderings and notations on these sheets are only conceptual views of the project site and are based on the information supplied to the design staff. Should obscured architectural details or problems be revealed, the local Main Street manager should be notified and consulted. General notes are provided as a guideline for preservation and revitalization techniques and are generally based on the Secretary of the Department of Interior's Standards for Historic Preservation. A copy of this publication may be viewed at the local project manager's office. For further information regarding incentive tax credits or issues regarding clarification of the Secretary of the Interior's Standards call the Nebraska State Historic Preservation Office of the Nebraska Historical Society. For more detailed technical assistance of product information, the state Main Street office has compiled lists of architects, engineers, preservation consultants, contractors, and product manufacturers who have expressed an interest in the Main Street Program. Since the Nebraska Lied Main Street Program is unable to endorse these entities, it is recommended that the building owners thoroughly check all references before engaging such contacts. These resource lists may be obtained through the local community manager's office. The work here takes no specific consideration of local building codes, fire ordinances, municipal zoning codes, and items relevant to the federal "Americans with Disabilities Act." Wherever pertinent these regulations always will supercede the intentions of the conceptual proposal illustrated here. Where applicable, all work must be approved by the local Main Street design review committee.



**Image 13: Option 10.** One continuous awning in Sunbrella fabric Walnut Brown Tweed (4618) is centered on the facade. The signage is applied to the front windows and top of the door glass. Two concrete benches and two concrete planters are placed on the concrete platforms that flank the door.



**Image 14: Option 11.** Three separate awnings in Sunbrella fabric Walnut Brown Tweed (4618) are centered above the windows and door. As seen in Options 6 through 8, these awnings are simply sloping planes without sides or valances. Still Point logos are applied to the front windows and door. Concrete benches and planters flank the entrance.

**Image 15 (left): Option 12.** A single awning in Sunbrella fabric Walnut Brown Tweed (4618) is centered above the door only. Still Point logos are applied to the front windows and the awning. Concrete planters and benches flank the entrance.

**Image 16 (below): Awning Fabric.** Walnut Brown Tweed (4618).



Design assistance for:  
**Still Point Healing Arts**  
**Sally Knudsen**  
 114 E 6th St.  
 Lexington, NE 68850

Produced under the direction of:  
**Nebraska Lied Main Street**  
 P.O. Box 83107  
 Lincoln, 68501-3107  
 Phone: 402.323.7337 Fax: 402.323.7349

Project Code:  
**LXN0601**  
 Date:  
**13 NOV 2006**

Sheet No.:  
**4 / 5**

**DISCLAIMER :**

The Nebraska Lied Main Street Program provides this nominal charge design assistance to property owners in officially designated Main Street project areas. The renderings and notations on these sheets are only conceptual views of the project site and are based on the information supplied to the design staff. Should obscured architectural details or problems be revealed, the local Main Street manager should be notified and consulted. General notes are provided as a guideline for preservation and revitalization techniques and are generally based on the Secretary of the Department of Interior's Standards for Historic Preservation. A copy of this publication may be viewed at the local project manager's office. For further information regarding incentive tax credits or issues regarding clarification of the Secretary of the Interior's Standards call the Nebraska State Historic Preservation Office of the Nebraska Historical Society. For more detailed technical assistance of product information, the state Main Street office has compiled lists of architects, engineers, preservation consultants, contractors, and product manufacturers who have expressed an interest in the Main Street Program. Since the Nebraska Lied Main Street Program is unable to endorse these entities, it is recommended that the building owners thoroughly check all references before engaging such contacts. These resource lists may be obtained through the local community manager's office. The work here takes no specific consideration of local building codes, fire ordinances, municipal zoning codes, and items relevant to the federal "Americans with Disabilities Act." Wherever pertinent these regulations always will supercede the intentions of the conceptual proposal illustrated here. Where applicable, all work must be approved by the local Main Street design review committee.



**Image 17: Logo Option A.** This signage option appears in facade Option 1, Options 4 through 5, and Options 10 through 12. .

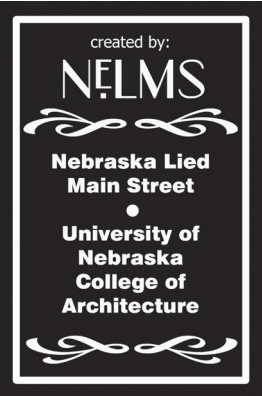
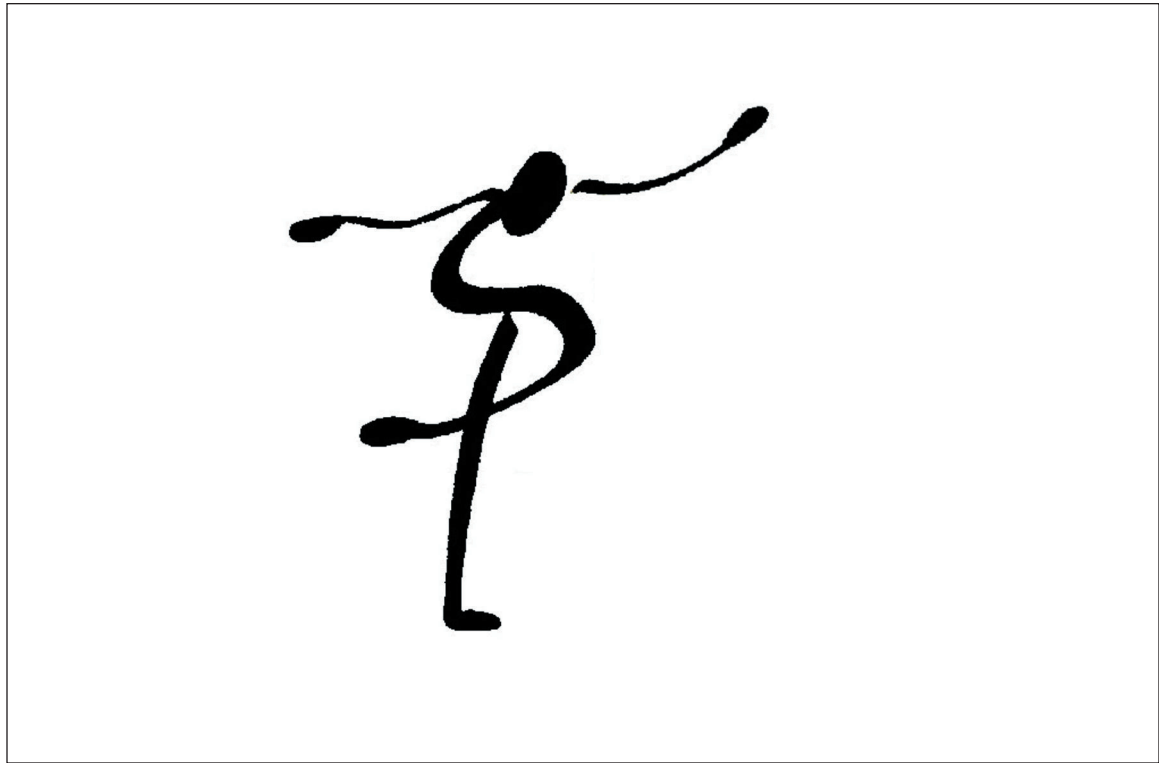


**Image 18: Logo Option B.** This signage option appears in facade Options 2 and 3 and Options 7 through 9.

**Image 19: Logo Option C.** This signage option appears in facade Options 12.



**Image 20: Logo Option D.** This signage option appears in facade Options 1 and 2, Option 5, Options 7 through 9, and Options 10 and 11.



Design assistance for:  
**Still Point Healing Arts**  
**Sally Knudsen**  
 114 E 6th St.  
 Lexington, NE 68850

Produced under the direction of:  
**Nebraska Lied Main Street**  
 P.O. Box 83107  
 Lincoln, 68501-3107  
 Phone: 402.323.7337 Fax: 402.323.7349

Project Code:  
**LXN0601**  
 Date:  
**13 NOV 2006**

Sheet No.:  
**5 / 5**