

DISCLAIMER :

The Nebraska Lied Main Street Program provides this nominal charge design assistance to property owners in officially designated Main Street project areas. The renderings and notations on these sheets are only conceptual views of the project site and are based on the information supplied to the design staff. Should obscured architectural details or problems be revealed, the local Main Street manager should be notified and consulted. General notes are provided as a guideline for preservation and revitalization techniques and are generally based on the Secretary of the Department of Interior's Standards for Historic Preservation. A copy of this publication may be viewed at the local project manager's office. For further information regarding incentive tax credits or issues regarding clarification of the Secretary of the Interior's Standards call the Nebraska State Historic Preservation Office of the Nebraska Historical Society. For more detailed technical assistance of product information, the state Main Street office has compiled lists of architects, engineers, preservation consultants, contractors, and product manufacturers who have expressed an interest in the Main Street Program. Since the Nebraska Lied Main Street Program is unable to endorse these entities, it is recommended that the building owners thoroughly check all references before engaging such contacts. These resource lists may be obtained through the local community manager's office. The work here takes no specific consideration of local building codes, fire ordinances, municipal zoning codes, and items relevant to the federal "Americans with Disabilities Act." Wherever pertinent these regulations always will supercede the intentions of the conceptual proposal illustrated here. Where applicable, all work must be approved by the local Main Street design review committee.



Image 1. Existing Condition (West Facade):

The existing condition of the west (front) facade of the Shear Magic Salon building has a somewhat "busy" appearance. Updated signage, paint, window displays and an awning, if properly integrated, can enhance the appearance of the facade and create a street front that is visually cohesive and inviting to customers.

Notes:

Existing storefront glass (untinted), window frames, doors and door frames are to remain intact.

All awning fabrics specified are available from Sunbrella (<http://www.sunbrella.com/>).



Image 2. Existing Streetscape: This rendering shows the current Shear Magic Salon building in the context of the existing block.



Design assistance for:
Shear Magic Salon
1905 Central Avenue
Kearney, NE 68847

Produced under the direction of:
Nebraska Lied Main Street
P.O. Box 83107
Lincoln, 68501-3107
Phone: 402.323.7337 Fax: 402.323.7349

Project Code:
KNY0801
Date:
5 MAY 2008

Sheet No.:
1/5

DISCLAIMER :

The Nebraska Lied Main Street Program provides this nominal charge design assistance to property owners in officially designated Main Street project areas. The renderings and notations on these sheets are only conceptual views of the project site and are based on the information supplied to the design staff. Should obscured architectural details or problems be revealed, the local Main Street manager should be notified and consulted. General notes are provided as a guideline for preservation and revitalization techniques and are generally based on the Secretary of the Department of Interior's Standards for Historic Preservation. A copy of this publication may be viewed at the local project manager's office. For further information regarding incentive tax credits or issues regarding clarification of the Secretary of the Interior's Standards call the Nebraska State Historic Preservation Office of the Nebraska Historical Society. For more detailed technical assistance of product information, the state Main Street office has compiled lists of architects, engineers, preservation consultants, contractors, and product manufacturers who have expressed an interest in the Main Street Program. Since the Nebraska Lied Main Street Program is unable to endorse these entities, it is recommended that the building owners thoroughly check all references before engaging such contacts. These resource lists may be obtained through the local community manager's office. The work here takes no specific consideration of local building codes, fire ordinances, municipal zoning codes, and items relevant to the federal "Americans with Disabilities Act." Wherever pertinent these regulations always will supercede the intentions of the conceptual proposal illustrated here. Where applicable, all work must be approved by the local Main Street design review committee.



Image 3. Option 1 (West Facade):

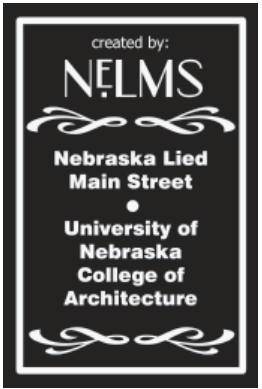
The existing metal canopy has been removed and replaced with an awning, using "Bisque Brown" (#4773) fabric available from Sunbrella. The bottom edge of the new awning is aligned with the top of the entry doors. Newly painted doors, door frames and bench match the color scheme of the awning. The screen door on the north entry has been removed to achieve visual cohesion between the two businesses. Signage on the parapet wall and on the existing canopy has been removed, while leaving the vinyl window signage in place. Window displays have been simplified by removing any extraneous displays in addition to the removal of the existing barber shop "pole" attached to the brick.



Image 4. Sunbrella fabric sample "Bisque Brown" (#4773).



Image 5. Option 1 (Streetscape): This rendering shows Option 1 (Image 3) of the Shear Magic Salon building in the context of the existing block. The building presents itself as being unique and distinguishable from the surrounding businesses.



Design assistance for:
Shear Magic Salon
1905 Central Avenue
Kearney, NE 68847

Produced under the direction of:
Nebraska Lied Main Street
P.O. Box 83107
Lincoln, 68501-3107
Phone: 402.323.7337 Fax: 402.323.7349

Project Code:
KNY0801
Date:
5 MAY 2008

Sheet No.:
2/5

DISCLAIMER :

The Nebraska Lied Main Street Program provides this nominal charge design assistance to property owners in officially designated Main Street project areas. The renderings and notations on these sheets are only conceptual views of the project site and are based on the information supplied to the design staff. Should obscured architectural details or problems be revealed, the local Main Street manager should be notified and consulted. General notes are provided as a guideline for preservation and revitalization techniques and are generally based on the Secretary of the Department of Interior's Standards for Historic Preservation. A copy of this publication may be viewed at the local project manager's office. For further information regarding incentive tax credits or issues regarding clarification of the Secretary of the Interior's Standards call the Nebraska State Historic Preservation Office of the Nebraska Historical Society. For more detailed technical assistance of product information, the state Main Street office has compiled lists of architects, engineers, preservation consultants, contractors, and product manufacturers who have expressed an interest in the Main Street Program. Since the Nebraska Lied Main Street Program is unable to endorse these entities, it is recommended that the building owners thoroughly check all references before engaging such contacts. These resource lists may be obtained through the local community manager's office. The work here takes no specific consideration of local building codes, fire ordinances, municipal zoning codes, and items relevant to the federal "Americans with Disabilities Act." Wherever pertinent these regulations always will supercede the intentions of the conceptual proposal illustrated here. Where applicable, all work must be approved by the local Main Street design review committee.



Image 9. Option 3 (West Facade):

The alterations made in Option 3 are similar to the changes made in Option 1 with two exceptions:

The existing metal canopy has been replaced with an awning using "Captain Navy Regimental" (#4962) fabric. The entrance doors and door frames are painted dark brown (or bronze) to match the window frames.



Image 10. Sunbrella fabric sample "Captain Navy Regimental" (#4962).



Image 11. Option 3 (Streetscape): This rendering shows Option 3 (Image 9) of the Shear Magic Salon building in the context of the existing block.



Design assistance for:
Shear Magic Salon
 1905 Central Avenue
 Kearney, NE 68847

Produced under the direction of:
Nebraska Lied Main Street
 P.O. Box 83107
 Lincoln, 68501-3107
 Phone: 402.323.7337 Fax: 402.323.7349

Project Code:
KNY0801
 Date:
5 MAY 2008

Sheet No.:
4/5

DISCLAIMER :

The Nebraska Lied Main Street Program provides this nominal charge design assistance to property owners in officially designated Main Street project areas. The renderings and notations on these sheets are only conceptual views of the project site and are based on the information supplied to the design staff. Should obscured architectural details or problems be revealed, the local Main Street manager should be notified and consulted. General notes are provided as a guideline for preservation and revitalization techniques and are generally based on the Secretary of the Department of Interior's Standards for Historic Preservation. A copy of this publication may be viewed at the local project manager's office. For further information regarding incentive tax credits or issues regarding clarification of the Secretary of the Interior's Standards call the Nebraska State Historic Preservation Office of the Nebraska Historical Society. For more detailed technical assistance of product information, the state Main Street office has compiled lists of architects, engineers, preservation consultants, contractors, and product manufacturers who have expressed an interest in the Main Street Program. Since the Nebraska Lied Main Street Program is unable to endorse these entities, it is recommended that the building owners thoroughly check all references before engaging such contacts. These resource lists may be obtained through the local community manager's office. The work here takes no specific consideration of local building codes, fire ordinances, municipal zoning codes, and items relevant to the federal "Americans with Disabilities Act." Wherever pertinent these regulations always will supercede the intentions of the conceptual proposal illustrated here. Where applicable, all work must be approved by the local Main Street design review committee.



Image 12. Option 4 (West Facade):

The alterations made in Option 4 are similar to the changes made in Option 2 with one exception:

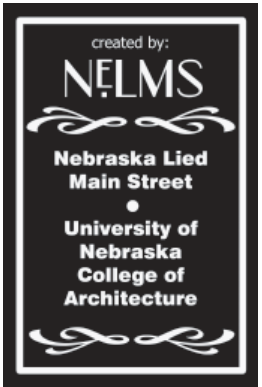
The existing metal canopy has been replaced with an awning using "Captain Navy/Natural Classic" (#4902) fabric.



Image 13. Sunbrella fabric sample
"Captain Navy/Natural Classic" (#4902).



Image 14. Option 4 (Streetscape): This rendering shows Option 4 (Image 12) of the Shear Magic Salon building in the context of the existing block.



Design assistance for:
Shear Magic Salon
1905 Central Avenue
Kearney, NE 68847

Produced under the direction of:
Nebraska Lied Main Street
P.O. Box 83107
Lincoln, 68501-3107
Phone: 402.323.7337 Fax: 402.323.7349

Project Code:
KNY0801
Date:
5 MAY 2008

Sheet No.:
5 / 5

DISCLAIMER :

The Nebraska Lied Main Street Program provides this nominal charge design assistance to property owners in officially designated Main Street project areas. The renderings and notations on these sheets are only conceptual views of the project site and are based on the information supplied to the design staff. Should obscured architectural details or problems be revealed, the local Main Street manager should be notified and consulted. General notes are provided as a guideline for preservation and revitalization techniques and are generally based on the Secretary of the Department of Interior's Standards for Historic Preservation. A copy of this publication may be viewed at the local project manager's office. For further information regarding incentive tax credits or issues regarding clarification of the Secretary of the Interior's Standards call the Nebraska State Historic Preservation Office of the Nebraska Historical Society. For more detailed technical assistance of product information, the state Main Street office has compiled lists of architects, engineers, preservation consultants, contractors, and product manufacturers who have expressed an interest in the Main Street Program. Since the Nebraska Lied Main Street Program is unable to endorse these entities, it is recommended that the building owners thoroughly check all references before engaging such contacts. These resource lists may be obtained through the local community manager's office. The work here takes no specific consideration of local building codes, fire ordinances, municipal zoning codes, and items relevant to the federal "Americans with Disabilities Act." Wherever pertinent these regulations always will supercede the intentions of the conceptual proposal illustrated here. Where applicable, all work must be approved by the local Main Street design review committee.



Image 15. Option 5 (West Facade): The existing metal canopy has been removed and replaced with an awning, using "Brass/Black Cherry Classic" (#4939) fabric available from Sunbrella. The bottom edge of the new awning is aligned with the top of the entry doors. Newly painted doors, door frames and bench match the color scheme of the awning. The screen door on the north entry has been removed to achieve visual cohesion between the two businesses. Signage on the parapet wall and on the existing canopy has been removed, while leaving the vinyl window signage in place. Window displays have been simplified by removing any extraneous displays in addition to the removal of the existing barber shop "pole" attached to the brick.

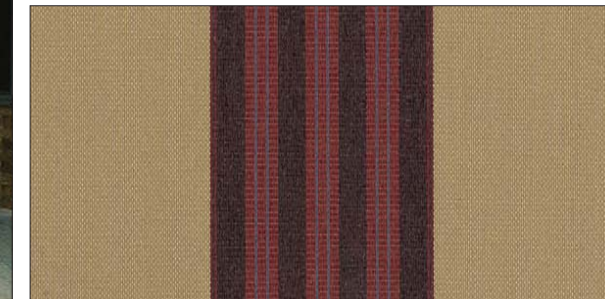


Image 16. Sunbrella fabric sample "Brass/Black Cherry Classic" (#4939).



Image 17. Option 5 (Streetscape): This rendering shows Option 5 (Image 15) of the Shear Magic Salon building in the context of the existing block.



Design assistance for:
Shear Magic Salon
 1905 Central Avenue
 Kearney, NE 68847

Produced under the direction of:
Nebraska Lied Main Street
 P.O. Box 83107
 Lincoln, 68501-3107
 Phone: 402.323.7337 Fax: 402.323.7349

Project Code:
KNY0801
 Date:
5 MAY 2008

Sheet No.:
6 / 6