

**DISCLAIMER:**

The Nebraska Lied Main Street Program provides this nominal charge design assistance to property owners in officially designated Main Street project areas. The renderings and notations on these sheets are only conceptual views of the project site and are based on the information supplied to the design staff. Should obscured architectural details or problems be revealed, the local Main Street manager should be notified and consulted. General notes are provided as a guideline for preservation and revitalization techniques and are generally based on the Secretary of the Department of Interior's Standards for Historic Preservation. A copy of this publication may be viewed at the local project manager's office. For further information regarding incentive tax credits or issues regarding clarification of the Secretary of the Interior's Standards call the Nebraska State Historic Preservation Office of the Nebraska Historical Society. For more detailed technical assistance of product information, the state Main Street office has compiled lists of architects, engineers, preservation consultants, contractors, and product manufacturers who have expressed an interest in the Main Street Program. Since the Nebraska Lied Main Street Program is unable to endorse these entities, it is recommended that the building owners thoroughly check all references before engaging such contacts. These resource lists may be obtained through the local community manager's office. The work here takes no specific consideration of local building codes, fire ordinances, municipal zoning codes, and items relevant to the federal "Americans with Disabilities Act." Wherever pertinent these regulations always will supercede the intentions of the conceptual proposal illustrated here. Where applicable, all work must be approved by the local Main Street design review committee.



**Image 1.** The Half-Time Deli is located in the historic C.D. and Mercy Essig Building ("Tyrone Building") at 827 10th Avenue (far left in photo). This west facing building, constructed in 1887 with limestone quarried from the Haskell Homestead north of Sidney, is situated at the north boundary of the National Register historic district in Sidney's business district. The original first-floor storefront has been altered with the removal of the original stone columns that divided the storefront. Also, a thin coating of stucco was added to the front facade, but does

not conceal the distinguishable courses of limestone blocks. The original storefront windows have been replaced with aluminum frame windows and vertical corrugated aluminum sheathing has been placed over the transom windows. The three original second story double hung windows have been replaced with smaller windows and infill panels. The pressed metal cornice with end brackets is exceptionally well-preserved.



**Image 2.** Close-up of west facade.



**Image 3.** Current state of north facade.

created by:  
**NELMS**  
Nebraska Lied  
Main Street  
•  
University of  
Nebraska  
College of  
Architecture

Design assistance for:  
**The Half-Time Deli**  
**Kay and Dennis Hicks**  
827 10th Avenue  
Sidney, NE 69162

Produced under the direction of:  
**Nebraska Lied Main Street**  
P.O. Box 83107  
Lincoln, NE 68501-3107  
Phone: 402.323.7337 Fax: 402.323.7349

Project Code:  
**SDY0604**  
Date:  
**25 JUL 2006**

Sheet No.:  
**1/5**



**DISCLAIMER :**

The Nebraska Lied Main Street Program provides this nominal charge design assistance to property owners in officially designated Main Street project areas. The renderings and notations on these sheets are only conceptual views of the project site and are based on the information supplied to the design staff. Should obscured architectural details or problems be revealed, the local Main Street manager should be notified and consulted. General notes are provided as a guideline for preservation and revitalization techniques and are generally based on the Secretary of the Department of Interior's Standards for Historic Preservation. A copy of this publication may be viewed at the local project manager's office. For further information regarding incentive tax credits or issues regarding clarification of the Secretary of the Interior's Standards call the Nebraska State Historic Preservation Office of the Nebraska Historical Society. For more detailed technical assistance of product information, the state Main Street office has compiled lists of architects, engineers, preservation consultants, contractors, and product manufacturers who have expressed an interest in the Main Street Program. Since the Nebraska Lied Main Street Program is unable to endorse these entities, it is recommended that the building owners thoroughly check all references before engaging such contacts. These resource lists may be obtained through the local community manager's office. The work here takes no specific consideration of local building codes, fire ordinances, municipal zoning codes, and items relevant to the federal "Americans with Disabilities Act." Wherever pertinent these regulations always will supercede the intentions of the conceptual proposal illustrated here. Where applicable, all work must be approved by the local Main Street design review committee.

Full height second story windows

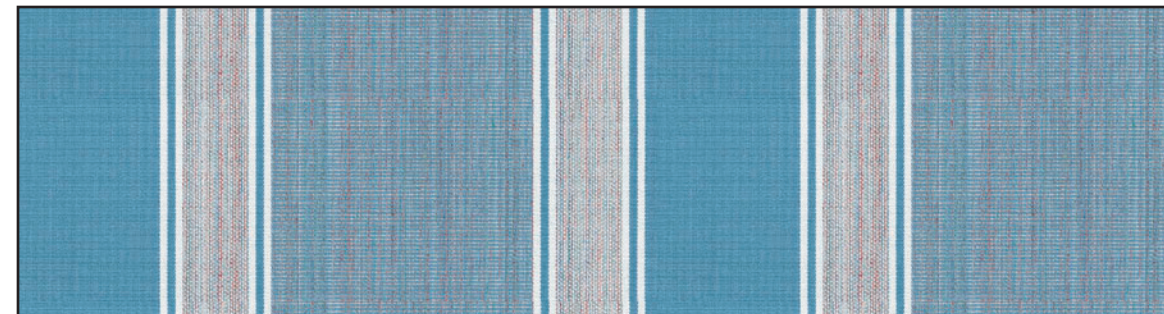
Painted signboard

Structural beam painted black

Awning with Sunbrella "Light Blue/ Natural Splash-Spun" (style #4782) fabric



**Image 4. Option 1:** This option compliments the current color scheme of the cornice by adding an awning with Sunbrella's "Light Blue/ Natural Splash-Spun" (style #4782) fabric (sample below). Also, the second story windows have been restored to their original height.



Sunbrella "Light Blue/ Natural Splash-Spun" (style #4782) fabric

Awning with Sunbrella "Light Blue/ Natural Splash-Spun" (style #4782) fabric

Painted signboard

Structural beam painted black

Awning with Sunbrella "Light Blue/ Natural Splash-Spun" (style #4782) fabric



**Image 5. Option 2:** This option compliments the current color scheme of the cornice by adding an awning with Sunbrella's "Light Blue/ Natural Splash-Spun" (style #4782) fabric (sample below) to the first floor, along with three smaller awnings to the second story windows. This option is shown with the existing second story windows.

the half- time deli

Signboard font: "Phoenix - Extended"

the half-time deli

Signboard font: "News"



Design assistance for:

**The Half-Time Deli**  
**Kay and Dennis Hicks**  
 827 10th Avenue  
 Sidney, NE 69162

Produced under the direction of:

**Nebraska Lied Main Street**  
 P.O. Box 83107  
 Lincoln, NE 68501-3107  
 Phone: 402.323.7337 Fax: 402.323.7349

Project Code:  
**SDY0604**  
 Date:  
**25 JUL 2006**

Sheet No.:  
**2/5**



**DISCLAIMER :**

The Nebraska Lied Main Street Program provides this nominal charge design assistance to property owners in officially designated Main Street project areas. The renderings and notations on these sheets are only conceptual views of the project site and are based on the information supplied to the design staff. Should obscured architectural details or problems be revealed, the local Main Street manager should be notified and consulted. General notes are provided as a guideline for preservation and revitalization techniques and are generally based on the Secretary of the Department of Interior's Standards for Historic Preservation. A copy of this publication may be viewed at the local project manager's office. For further information regarding incentive tax credits or issues regarding clarification of the Secretary of the Interior's Standards call the Nebraska State Historic Preservation Office of the Nebraska Historical Society. For more detailed technical assistance of product information, the state Main Street office has compiled lists of architects, engineers, preservation consultants, contractors, and product manufacturers who have expressed an interest in the Main Street Program. Since the Nebraska Lied Main Street Program is unable to endorse these entities, it is recommended that the building owners thoroughly check all references before engaging such contacts. These resource lists may be obtained through the local community manager's office. The work here takes no specific consideration of local building codes, fire ordinances, municipal zoning codes, and items relevant to the federal "Americans with Disabilities Act." Wherever pertinent these regulations always will supercede the intentions of the conceptual proposal illustrated here. Where applicable, all work must be approved by the local Main Street design review committee.

- Cornice painted red and white
- Building painted tan
- Full height second story windows with dark brown trim
- Painted signboard
- Structural beam painted dark brown
- Awning with Sunbrella "Red/ White - 6 Bar" (style #5703) fabric



**Image 6. Option 3:** An awning with Sunbrella's "Red/ White - 6 Bar" (style #5703) fabric (sample below) is installed above the first story storefront. The cornice is repainted to correspond with the awning colors. The second story windows are restored to full height.



Sunbrella "Red/ White - 6 Bar" (style #5703) fabric

- Cornice painted red and white
- Building painted tan
- Awning with Sunbrella "Red/ White - 6 Bar" (style #5703) fabric
- Second story window frames painted dark brown
- Painted signboard
- Structural beam painted dark brown
- Awning with Sunbrella "Red/ White - 6 Bar" (style #5703) fabric



**Image 7. Option 4:** An awning with Sunbrella's "Red/ White - 6 Bar" (style #5703) fabric (sample below) is installed above the first story storefront, as well as three smaller awnings above the second story windows. The cornice is repainted to correspond with the awning colors. This option is shown with the existing second story windows.

THE HALF-TIME DELI

Signboard font: "Heidelberg - Hollow Extended"

THE HALF-TIME DELI

Signboard font: "Horn"



Design assistance for:  
**Kay and Dennis Hicks**  
 827 10th Avenue  
 Sidney, NE 69162

Produced under the direction of:  
**Nebraska Lied Main Street**  
 P.O. Box 83107  
 Lincoln, NE 68501-3107  
 Phone: 402.323.7337 Fax: 402.323.7349

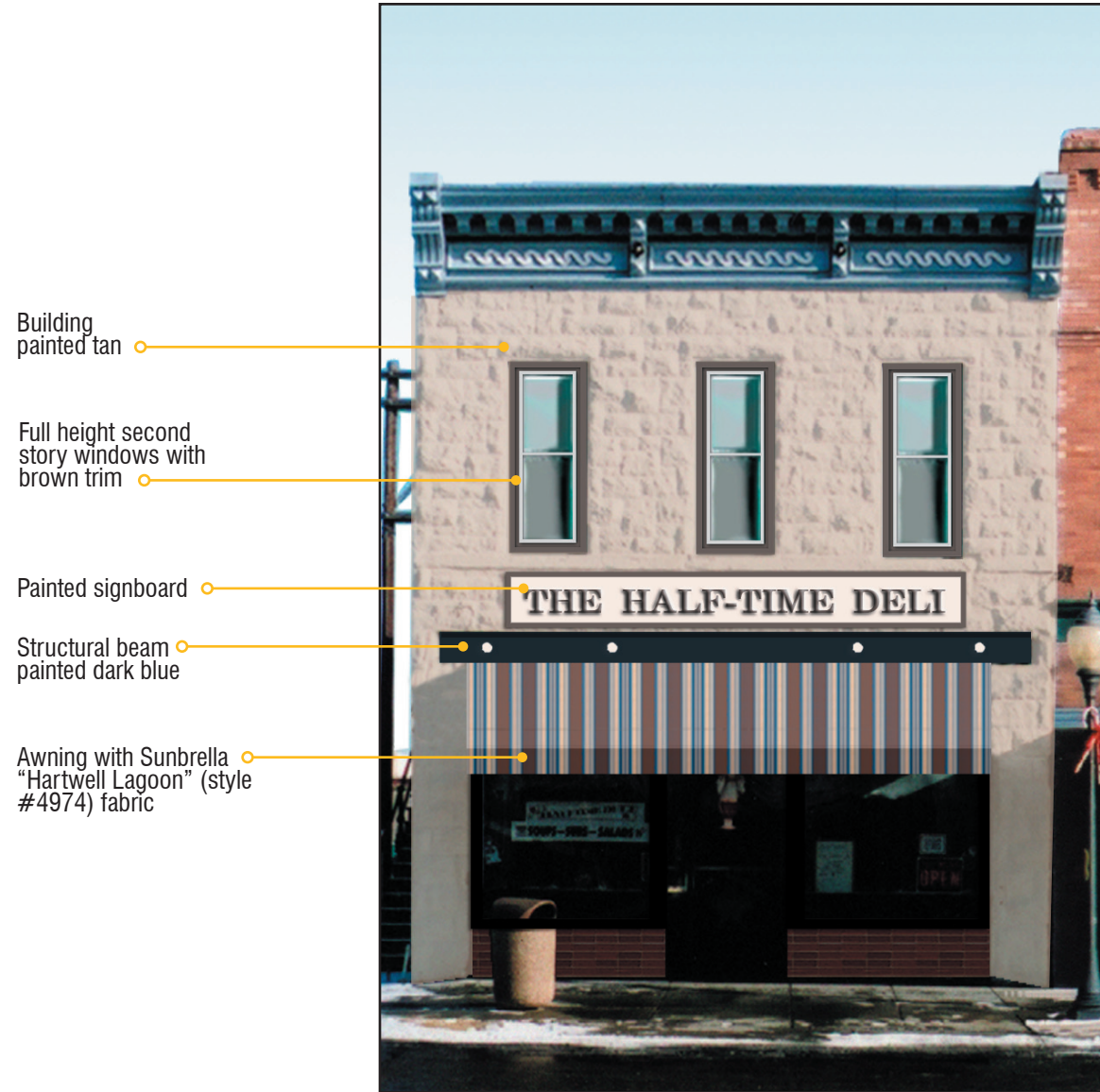
Project Code:  
**SDY0604**  
 Date:  
**21 MAR 2007**

Sheet No.:  
**3 / 5**



**DISCLAIMER:**

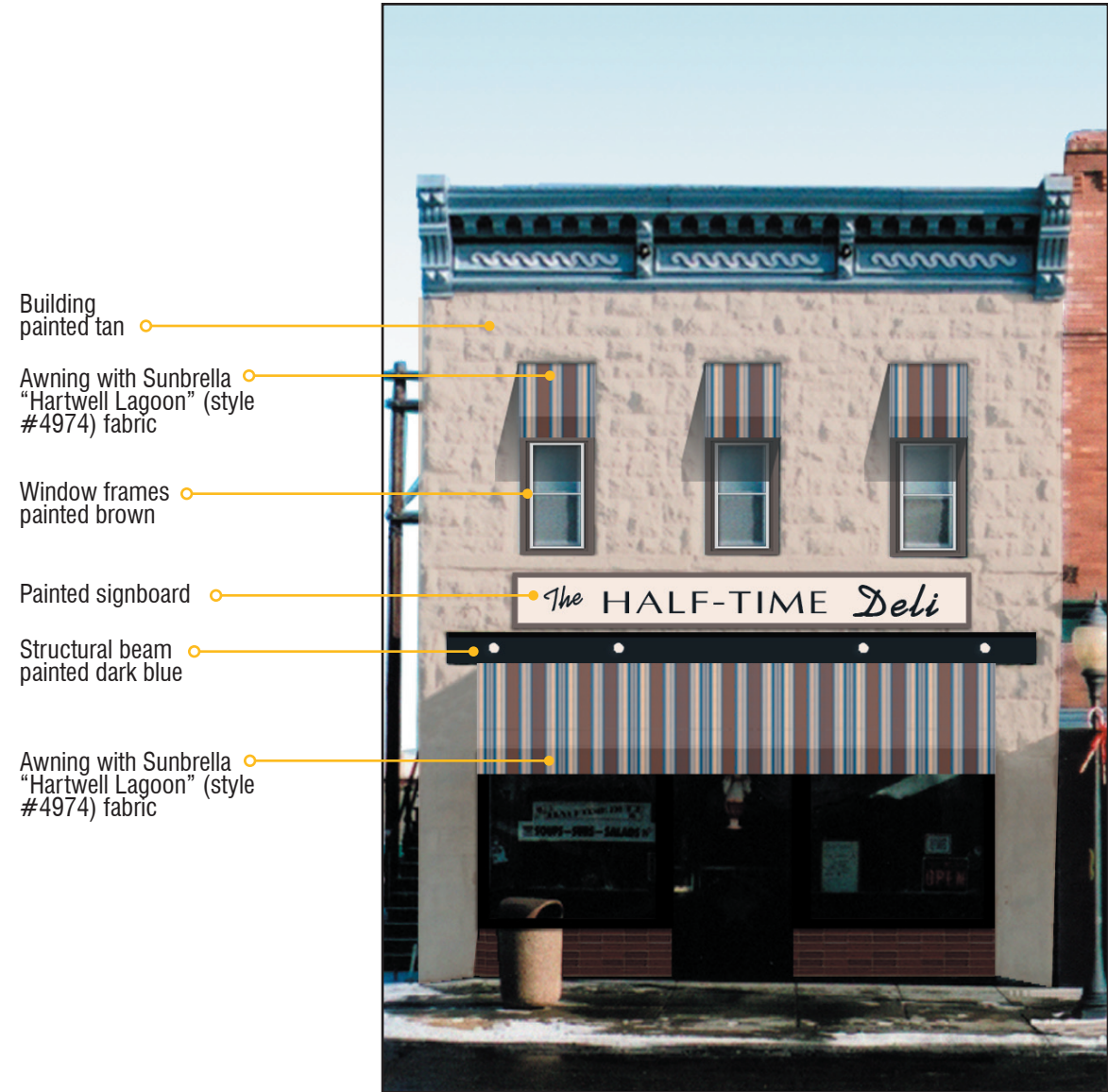
The Nebraska Lied Main Street Program provides this nominal charge design assistance to property owners in officially designated Main Street project areas. The renderings and notations on these sheets are only conceptual views of the project site and are based on the information supplied to the design staff. Should obscured architectural details or problems be revealed, the local Main Street manager should be notified and consulted. General notes are provided as a guideline for preservation and revitalization techniques and are generally based on the Secretary of the Department of Interior's Standards for Historic Preservation. A copy of this publication may be viewed at the local project manager's office. For further information regarding incentive tax credits or issues regarding clarification of the Secretary of the Interior's Standards call the Nebraska State Historic Preservation Office of the Nebraska Historical Society. For more detailed technical assistance of product information, the state Main Street office has compiled lists of architects, engineers, preservation consultants, contractors, and product manufacturers who have expressed an interest in the Main Street Program. Since the Nebraska Lied Main Street Program is unable to endorse these entities, it is recommended that the building owners thoroughly check all references before engaging such contacts. These resource lists may be obtained through the local community manager's office. The work here takes no specific consideration of local building codes, fire ordinances, municipal zoning codes, and items relevant to the federal "Americans with Disabilities Act." Wherever pertinent these regulations always will supercede the intentions of the conceptual proposal illustrated here. Where applicable, all work must be approved by the local Main Street design review committee.



**Image 8. Option 5:** An awning with Sunbrella's "Hartwell Lagoon" (style #4974) fabric (sample below) is installed above the first story storefront. Also, the second story windows are restored to full height.



Sunbrella "Hartwell Lagoon" (style #4974) fabric



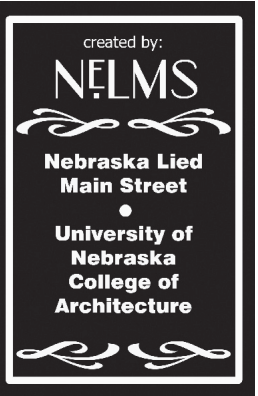
**Image 9. Option 6:** An awning with Sunbrella's "Hartwell Lagoon" (style #4974) fabric (sample below) is installed above the first story storefront, along with three smaller awnings above the second story windows. This option is shown with the existing second story windows.

# THE HALF-TIME DELI

Signboard font: "Annual Wide"

# HALF-TIME

Signboard font: "Last Uniform"



Design assistance for:  
**Kay and Dennis Hicks**  
 827 10th Avenue  
 Sidney, NE 69162

Produced under the direction of:  
**Nebraska Lied Main Street**  
 P.O. Box 83107  
 Lincoln, NE 68501-3107  
 Phone: 402.323.7337 Fax: 402.323.7349

Project Code:  
**SDY0604**  
 Date:  
**21 MAR 2007**

Sheet No.:  
**4 / 5**



**DISCLAIMER:**

The Nebraska Lied Main Street Program provides this nominal charge design assistance to property owners in officially designated Main Street project areas. The renderings and notations on these sheets are only conceptual views of the project site and are based on the information supplied to the design staff. Should obscured architectural details or problems be revealed, the local Main Street manager should be notified and consulted. General notes are provided as a guideline for preservation and revitalization techniques and are generally based on the Secretary of the Department of Interior's Standards for Historic Preservation. A copy of this publication may be viewed at the local project manager's office. For further information regarding incentive tax credits or issues regarding clarification of the Secretary of the Interior's Standards call the Nebraska State Historic Preservation Office of the Nebraska Historical Society. For more detailed technical assistance of product information, the state Main Street office has compiled lists of architects, engineers, preservation consultants, contractors, and product manufacturers who have expressed an interest in the Main Street Program. Since the Nebraska Lied Main Street Program is unable to endorse these entities, it is recommended that the building owners thoroughly check all references before engaging such contacts. These resource lists may be obtained through the local community manager's office. The work here takes no specific consideration of local building codes, fire ordinances, municipal zoning codes, and items relevant to the federal "Americans with Disabilities Act." Wherever pertinent these regulations always will supercede the intentions of the conceptual proposal illustrated here. Where applicable, all work must be approved by the local Main Street design review committee.

Full height second story windows with dark brown trim

Painted signboard

Structural beam painted dark brown

Awning with Sunbrella "Sky Blue" (style #4624) fabric



**Image 10. Option 7:** An awning with Sunbrella's "Sky Blue" (style #4624) fabric (sample below) is installed above the first story storefront. Also, the second story windows are restored to full height.



Sunbrella "Sky Blue" (style #4624) fabric

Awning with Sunbrella "Sky Blue" (style #4624) fabric

Window frames painted dark brown

Structural beam painted dark brown

Awning with Sunbrella "Sky Blue" (style #4624) fabric



**Image 11. Option 8:** An awning with Sunbrella's "Sky Blue" (style #4624) fabric (sample below) is installed above the first story storefront, along with three smaller awnings above the second story windows. This option is shown with the existing second story windows.

# THE HALF-TIME DELI

Signboard font: "Broadside"

# THE HALF-TIME DELI

Signboard font: "BN Elements"

created by:  
**NELMS**  
 Nebraska Lied Main Street  
 •  
 University of Nebraska College of Architecture

Design assistance for:  
**Kay and Dennis Hicks**  
 827 10th Avenue  
 Sidney, NE 69162

Produced under the direction of:  
**Nebraska Lied Main Street**  
 P.O. Box 83107  
 Lincoln, NE 68501-3107  
 Phone: 402.323.7337 Fax: 402.323.7349

Project Code:  
**SDY0604**  
 Date:  
**21 MAR 2007**

Sheet No.:  
**5 / 5**



**DISCLAIMER:**

The Nebraska Lied Main Street Program provides this nominal charge design assistance to property owners in officially designated Main Street project areas. The renderings and notations on these sheets are only conceptual views of the project site and are based on the information supplied to the design staff. Should obscured architectural details or problems be revealed, the local Main Street manager should be notified and consulted. General notes are provided as a guideline for preservation and revitalization techniques and are generally based on the Secretary of the Department of Interior's Standards for Historic Preservation. A copy of this publication may be viewed at the local project manager's office. For further information regarding incentive tax credits or issues regarding clarification of the Secretary of the Interior's Standards call the Nebraska State Historic Preservation Office of the Nebraska Historical Society. For more detailed technical assistance of product information, the state Main Street office has compiled lists of architects, engineers, preservation consultants, contractors, and product manufacturers who have expressed an interest in the Main Street Program. Since the Nebraska Lied Main Street Program is unable to endorse these entities, it is recommended that the building owners thoroughly check all references before engaging such contacts. These resource lists may be obtained through the local community manager's office. The work here takes no specific consideration of local building codes, fire ordinances, municipal zoning codes, and items relevant to the federal "Americans with Disabilities Act." Wherever pertinent these regulations always will supercede the intentions of the conceptual proposal illustrated here. Where applicable, all work must be approved by the local Main Street design review committee.



Cornice painted dark green with red accents

Building painted taupe

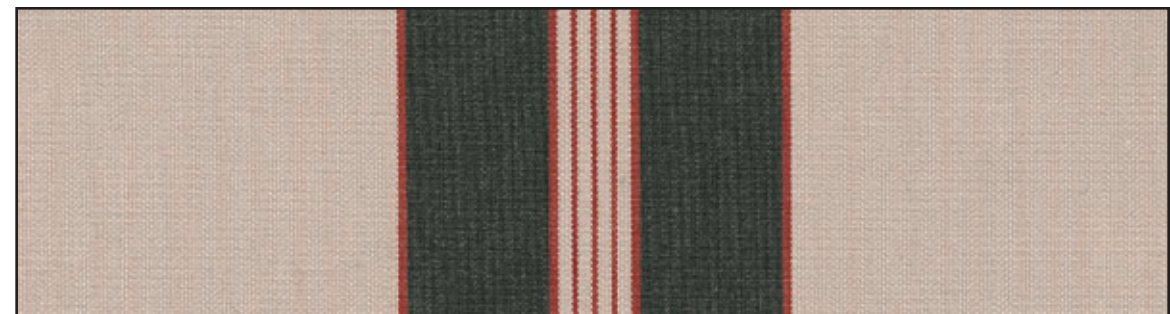
Second story windows frames painted dark green

Painted signboard

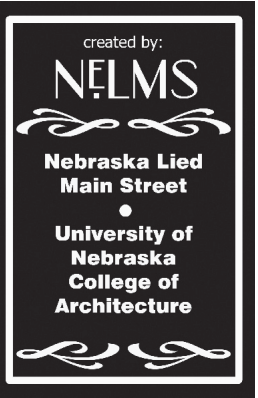
Structural beam painted dark green with red accents

Awning with Sunbrella "Alpine/Terra Cotta Classic" (style #4924) fabric

**Image12. Option 9:** An awning with Sunbrella's "Alpine/Terra Cotta Classic" (style #4924) fabric (sample at right) is installed above the first story storefront, as well as three smaller awnings above the second story windows. The building accents are repainted to correspond with the awning colors. This option is shown with the existing second story windows.



Sunbrella "Alpine/Terra Cotta Classic" (style #4924) fabric



Design assistance for:

**Kay and Dennis Hicks**  
827 10th Avenue  
Sidney, NE 69162

Produced under the direction of:

**Nebraska Lied Main Street**  
P.O. Box 83107  
Lincoln, NE 68501-3107  
Phone: 402.323.7337 Fax: 402.323.7349

Project Code:

**SDY0604**

Date:

**21 MAR 2007**

Sheet No.:

**1/1**