

**DISCLAIMER:**

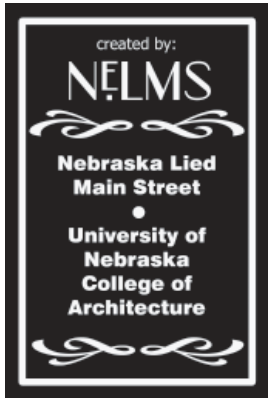
The Nebraska Lied Main Street Program provides this nominal charge design assistance to property owners in officially designated Main Street project areas. The renderings and notations on these sheets are only conceptual views of the project site and are based on the information supplied to the design staff. Should obscured architectural details or problems be revealed, the local Main Street manager should be notified and consulted. General notes are provided as a guideline for preservation and revitalization techniques and are generally based on the Secretary of the Department of Interior's Standards for Historic Preservation. A copy of this publication may be viewed at the local project manager's office. For further information regarding incentive tax credits or issues regarding clarification of the Secretary of the Interior's Standards call the Nebraska State Historic Preservation Office of the Nebraska Historical Society. For more detailed technical assistance of product information, the state Main Street office has compiled lists of architects, engineers, preservation consultants, contractors, and product manufacturers who have expressed an interest in the Main Street Program. Since the Nebraska Lied Main Street Program is unable to endorse these entities, it is recommended that the building owners thoroughly check all references before engaging such contacts. These resource lists may be obtained through the local community manager's office. The work here takes no specific consideration of local building codes, fire ordinances, municipal zoning codes, and items relevant to the federal "Americans with Disabilities Act." Wherever pertinent these regulations always will supercede the intentions of the conceptual proposal illustrated here. Where applicable, all work must be approved by the local Main Street design review committee.



**Image 1: Historical Photograph.** In this early photograph of the present Connie Swanson Photography building, all parts of the original façade—including second story windows; terra-cotta coping, cornice, sills, and accent pieces; full-width transom window; and storefront windows—are intact. The building is shown to have been a Waldman's store.



**Image 2: Historical Photograph.** In this photograph, the Connie Swanson Photography building is shown to have been the Vogue Ladies Apparel Store. The transom window has been covered with a "Vogue" signboard. Previous signage has been removed and some damage to the terra-cotta is evident. The storefront has also been modified.



Design assistance for:  
**Connie Swanson  
Photography**  
**Connie Swanson**  
209 West 3rd Street  
Grand Island, NE 68801

Produced under the direction of:  
**Nebraska Lied Main Street**  
P.O. Box 83107  
Lincoln, 68501-3107  
Phone: 402.323.7337 Fax: 402.323.7349

Project Code:  
**G R I 0 7 0 1**  
Date:  
**3 July 2007**

Sheet No.:  
**1 / 9**



**DISCLAIMER:**

The Nebraska Lied Main Street Program provides this nominal charge design assistance to property owners in officially designated Main Street project areas. The renderings and notations on these sheets are only conceptual views of the project site and are based on the information supplied to the design staff. Should obscured architectural details or problems be revealed, the local Main Street manager should be notified and consulted. General notes are provided as a guideline for preservation and revitalization techniques and are generally based on the Secretary of the Department of Interior's Standards for Historic Preservation. A copy of this publication may be viewed at the local project manager's office. For further information regarding incentive tax credits or issues regarding clarification of the Secretary of the Interior's Standards call the Nebraska State Historic Preservation Office of the Nebraska Historical Society. For more detailed technical assistance of product information, the state Main Street office has compiled lists of architects, engineers, preservation consultants, contractors, and product manufacturers who have expressed an interest in the Main Street Program. Since the Nebraska Lied Main Street Program is unable to endorse these entities, it is recommended that the building owners thoroughly check all references before engaging such contacts. These resource lists may be obtained through the local community manager's office. The work here takes no specific consideration of local building codes, fire ordinances, municipal zoning codes, and items relevant to the federal "Americans with Disabilities Act." Wherever pertinent these regulations always will supercede the intentions of the conceptual proposal illustrated here. Where applicable, all work must be approved by the local Main Street design review committee.



**Image 3: Existing Condition.** In the mid-1960s, a substantial plywood and metal false front was installed over the upper portion of the building facade. Portions of the lower facade were covered with one-inch-square ceramic tiles. Because the false front remains entirely intact, the condition of the original facade is unknown. The large second story windows are still in place and appear, from inspection after removal of an interior wall on the second floor, to be in fair condition. The original leaded glass transom window at the first floor storefront and the building's terra-cotta cornice have been removed.



**Image 4: Existing Condition.** The Connie Swanson Photography building is located near the midpoint of the 200 block of West 3rd Street, adjacent to the Archway building to the west. The building faces north.

These photographs show the existing condition of the Connie Swanson Photography building. The property owner would like to restore the building's facade as closely as possible to the historic original. Building improvements are to include the removal of the metal false facade, restoration to the degree needed, and installation of signage and lighting.

Note: Rendered images representing the design options include the removal of the street tree only for the purpose of better representing the photograph/rendering; the tree should be retained as part of the downtown Grand Island streetscape.



Design assistance for:  
**Connie Swanson  
Photography**  
Connie Swanson  
209 West 3rd Street  
Grand Island, NE 68801

Produced under the direction of:  
**Nebraska Lied Main Street**  
P.O. Box 83107  
Lincoln, 68501-3107  
Phone: 402.323.7337 Fax: 402.323.7349

Project Code:  
**G R I 0 7 0 1**  
Date:  
**3 July 2007**

Sheet No.:  
**2 / 9**



**DISCLAIMER :**

The Nebraska Lied Main Street Program provides this nominal charge design assistance to property owners in officially designated Main Street project areas. The renderings and notations on these sheets are only conceptual views of the project site and are based on the information supplied to the design staff. Should obscured architectural details or problems be revealed, the local Main Street manager should be notified and consulted. General notes are provided as a guideline for preservation and revitalization techniques and are generally based on the Secretary of the Department of Interior's Standards for Historic Preservation. A copy of this publication may be viewed at the local project manager's office. For further information regarding incentive tax credits or issues regarding clarification of the Secretary of the Interior's Standards call the Nebraska State Historic Preservation Office of the Nebraska Historical Society. For more detailed technical assistance of product information, the state Main Street office has compiled lists of architects, engineers, preservation consultants, contractors, and product manufacturers who have expressed an interest in the Main Street Program. Since the Nebraska Lied Main Street Program is unable to endorse these entities, it is recommended that the building owners thoroughly check all references before engaging such contacts. These resource lists may be obtained through the local community manager's office. The work here takes no specific consideration of local building codes, fire ordinances, municipal zoning codes, and items relevant to the federal "Americans with Disabilities Act." Wherever pertinent these regulations always will supercede the intentions of the conceptual proposal illustrated here. Where applicable, all work must be approved by the local Main Street design review committee.



**Image 5: Facade Reproduction.** This view represents what the building probably looked like before the addition of the false front in the mid-1960s.



**Image 6: Facade Reproduction.** This annotated view explains assumptions made in the production of subsequent drawings.

**Note:** The condition of the unadorned face terra-cotta units is unknown.

- Known to be removed.
- Assumed to be in fair condition.
- Assumed to be in good condition.



Design assistance for:  
**Connie Swanson**  
**Photography**  
**Connie Swanson**  
 209 West 3rd Street  
 Grand Island, NE 68801

Produced under the direction of:  
**Nebraska Lied Main Street**  
 P.O. Box 83107  
 Lincoln, 68501-3107  
 Phone: 402.323.7337 Fax: 402.323.7349

Project Code:  
**G R I 0 7 0 1**  
 Date:  
**3 July 2007**

Sheet No.:  
**3 / 9**



**DISCLAIMER :**

The Nebraska Lied Main Street Program provides this nominal charge design assistance to property owners in officially designated Main Street project areas. The renderings and notations on these sheets are only conceptual views of the project site and are based on the information supplied to the design staff. Should obscured architectural details or problems be revealed, the local Main Street manager should be notified and consulted. General notes are provided as a guideline for preservation and revitalization techniques and are generally based on the Secretary of the Department of Interior's Standards for Historic Preservation. A copy of this publication may be viewed at the local project manager's office. For further information regarding incentive tax credits or issues regarding clarification of the Secretary of the Interior's Standards call the Nebraska State Historic Preservation Office of the Nebraska Historical Society. For more detailed technical assistance of product information, the state Main Street office has compiled lists of architects, engineers, preservation consultants, contractors, and product manufacturers who have expressed an interest in the Main Street Program. Since the Nebraska Lied Main Street Program is unable to endorse these entities, it is recommended that the building owners thoroughly check all references before engaging such contacts. These resource lists may be obtained through the local community manager's office. The work here takes no specific consideration of local building codes, fire ordinances, municipal zoning codes, and items relevant to the federal "Americans with Disabilities Act." Wherever pertinent these regulations always will supercede the intentions of the conceptual proposal illustrated here. Where applicable, all work must be approved by the local Main Street design review committee.



**Image 7: Option 1.** This view shows the north-facing building frontage of the 200 block of West 3rd Street if Option 1 (Images 13-15) is utilized for the Connie Swanson Photography building.



**Image 8: Option 2.** This view shows the north-facing building frontage of the 200 block of West 3rd Street if Option 2 (Images 18-20) is utilized for the Connie Swanson Photography building.



**Image 9: Option 3.** This view shows the north-facing building frontage of the 200 block of West 3rd Street if Option 3 (Images 21-23) is utilized for the Connie Swanson Photography building.



Design assistance for:  
**Connie Swanson**  
**Photography**  
**Connie Swanson**  
 209 West 3rd Street  
 Grand Island, NE 68801

Produced under the direction of:  
**Nebraska Lied Main Street**  
 P.O. Box 83107  
 Lincoln, 68501-3107  
 Phone: 402.323.7337 Fax: 402.323.7349

Project Code:  
**G R I 0 7 0 1**  
 Date:  
**3 July 2007**

Sheet No.:

**4 / 9**



**DISCLAIMER:**

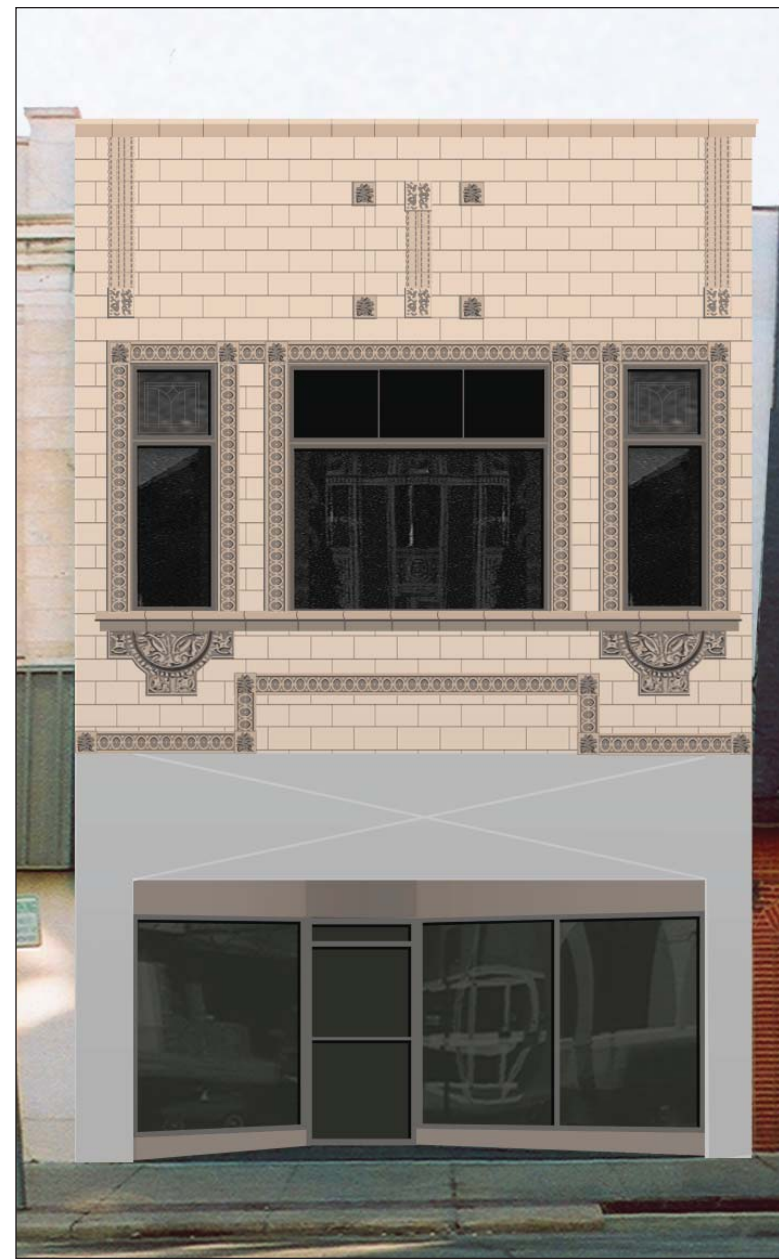
The Nebraska Lied Main Street Program provides this nominal charge design assistance to property owners in officially designated Main Street project areas. The renderings and notations on these sheets are only conceptual views of the project site and are based on the information supplied to the design staff. Should obscured architectural details or problems be revealed, the local Main Street manager should be notified and consulted. General notes are provided as a guideline for preservation and revitalization techniques and are generally based on the Secretary of the Department of Interior's Standards for Historic Preservation. A copy of this publication may be viewed at the local project manager's office. For further information regarding incentive tax credits or issues regarding clarification of the Secretary of the Interior's Standards call the Nebraska State Historic Preservation Office of the Nebraska Historical Society. For more detailed technical assistance of product information, the state Main Street office has compiled lists of architects, engineers, preservation consultants, contractors, and product manufacturers who have expressed an interest in the Main Street Program. Since the Nebraska Lied Main Street Program is unable to endorse these entities, it is recommended that the building owners thoroughly check all references before engaging such contacts. These resource lists may be obtained through the local community manager's office. The work here takes no specific consideration of local building codes, fire ordinances, municipal zoning codes, and items relevant to the federal "Americans with Disabilities Act." Wherever pertinent these regulations always will supercede the intentions of the conceptual proposal illustrated here. Where applicable, all work must be approved by the local Main Street design review committee.



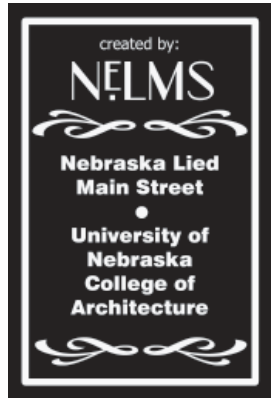
**Image 10: Fully Restored Terra-cotta.** This view shows the building if the terra-cotta is fully restored. The original cornice has been reproduced and replaced.



**Image 11: Partially Restored Terra-cotta.** This view shows the building if the terra-cotta is partially restored. A simplified cornice has been added, while the remainder of the building is restored by replacement of damaged terra-cotta units with reproduction units.



**Image 12: Limited Restoration of Terra-cotta.** This view shows the building if little restoration of the terra-cotta is possible. Undamaged terra-cotta is selectively removed from the lower portion of the building and used to replace broken pieces elsewhere on the building facade. A simplified cornice has been added. This view assumes that several terra-cotta sculptural pieces have been damaged.



Design assistance for:

**Connie Swanson**  
**Photography**  
**Connie Swanson**  
209 West 3rd Street  
Grand Island, NE 68801

Produced under the direction of:

**Nebraska Lied Main Street**  
P.O. Box 83107  
Lincoln, 68501-3107  
Phone: 402.323.7337 Fax: 402.323.7349

Project Code:

**G R I 0 7 0 1**

Date:

**3 July 2007**

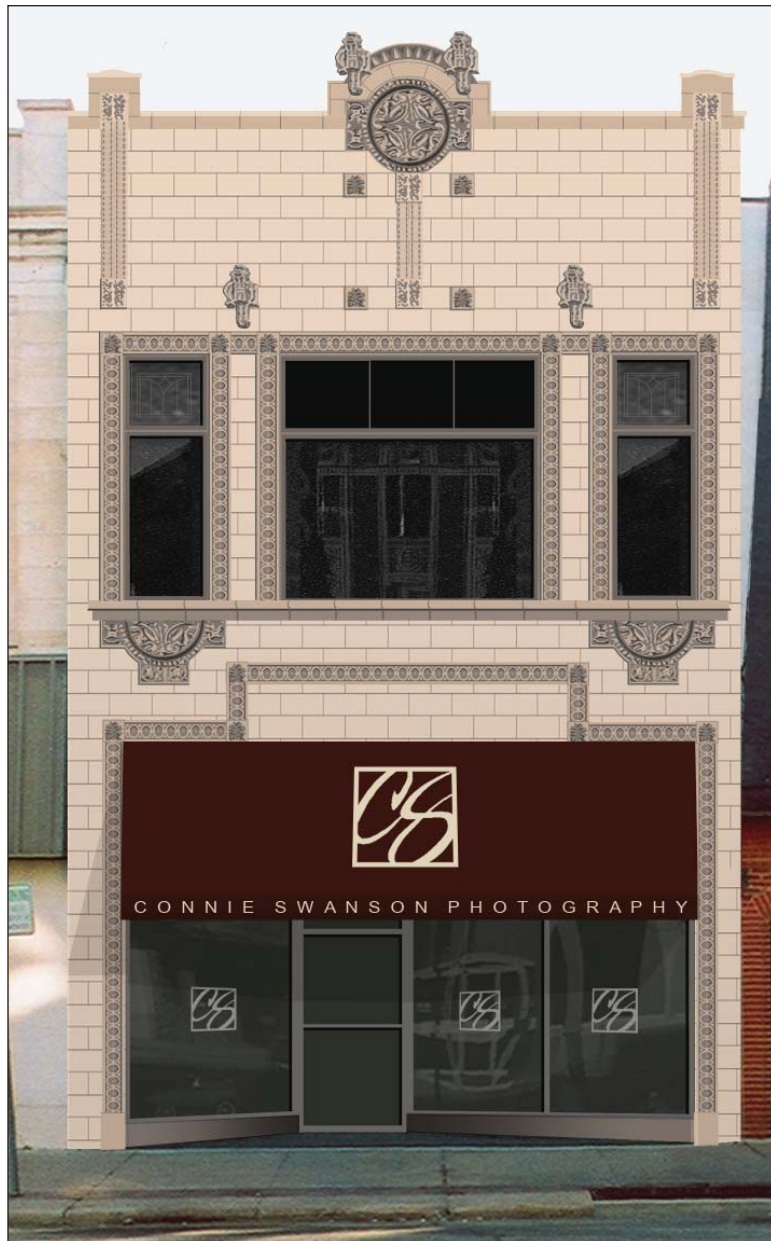
Sheet No.:

**5 / 9**



**DISCLAIMER:**

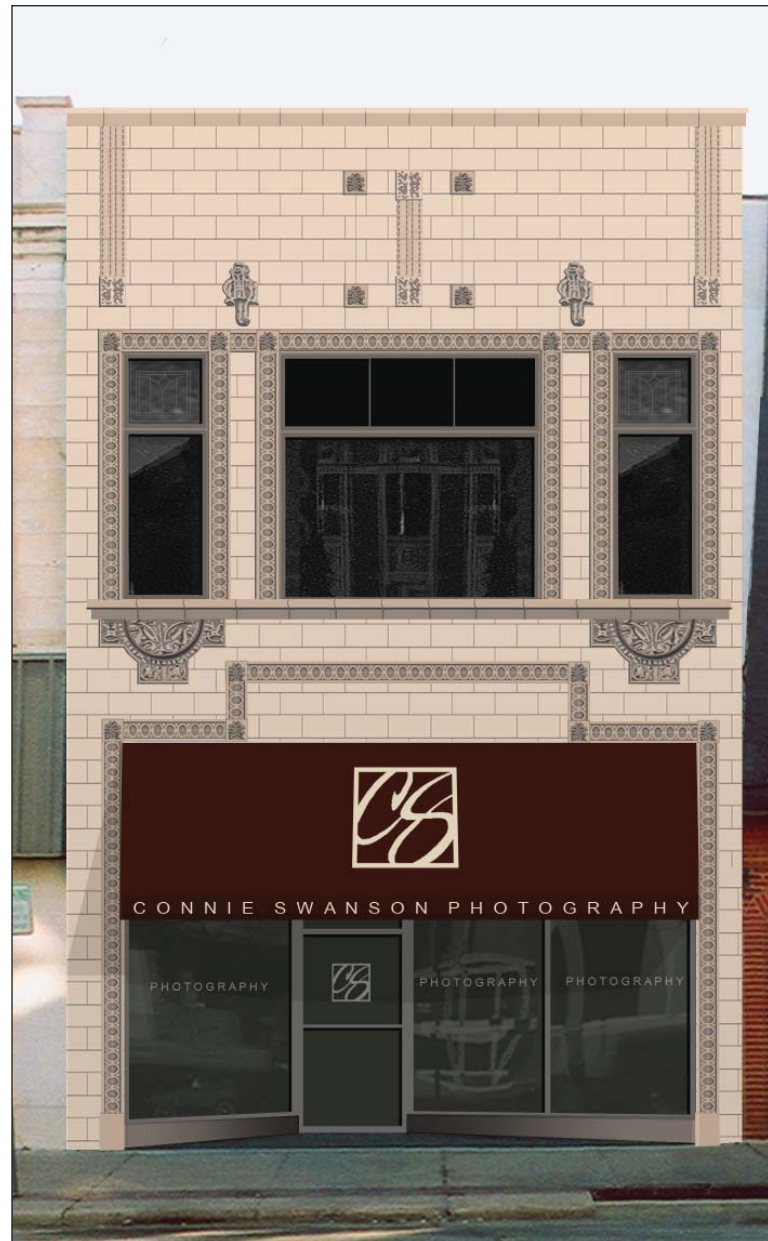
The Nebraska Lied Main Street Program provides this nominal charge design assistance to property owners in officially designated Main Street project areas. The renderings and notations on these sheets are only conceptual views of the project site and are based on the information supplied to the design staff. Should obscured architectural details or problems be revealed, the local Main Street manager should be notified and consulted. General notes are provided as a guideline for preservation and revitalization techniques and are generally based on the Secretary of the Department of Interior's Standards for Historic Preservation. A copy of this publication may be viewed at the local project manager's office. For further information regarding incentive tax credits or issues regarding clarification of the Secretary of the Interior's Standards call the Nebraska State Historic Preservation Office of the Nebraska Historical Society. For more detailed technical assistance of product information, the state Main Street office has compiled lists of architects, engineers, preservation consultants, contractors, and product manufacturers who have expressed an interest in the Main Street Program. Since the Nebraska Lied Main Street Program is unable to endorse these entities, it is recommended that the building owners thoroughly check all references before engaging such contacts. These resource lists may be obtained through the local community manager's office. The work here takes no specific consideration of local building codes, fire ordinances, municipal zoning codes, and items relevant to the federal "Americans with Disabilities Act." Wherever pertinent these regulations always will supercede the intentions of the conceptual proposal illustrated here. Where applicable, all work must be approved by the local Main Street design review committee.



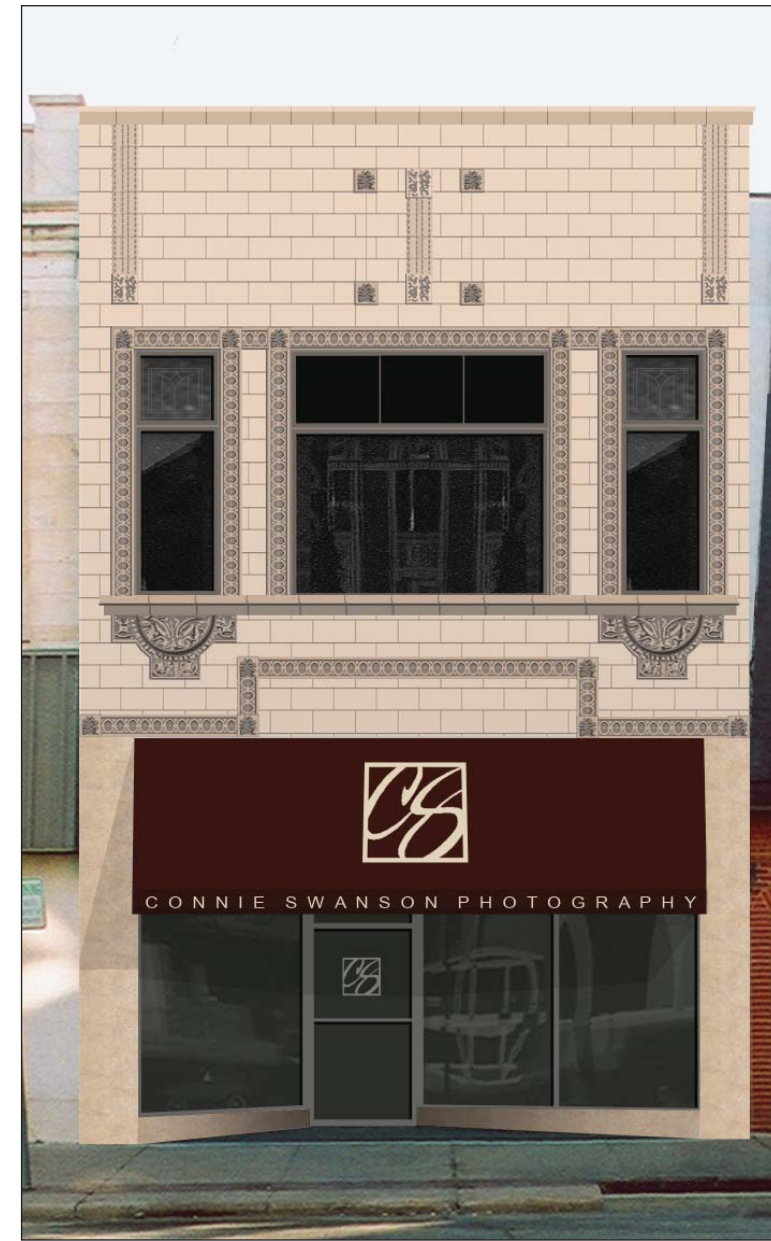
**Image 13: Option 1.** The former transom window and signboard opening has been covered with an awning fabricated with Sunbrella's "Mahogany" (style 4667) fabric, a sample of which is depicted below. Signage has been applied with graphic film directly onto the awning fabric in Arial font.



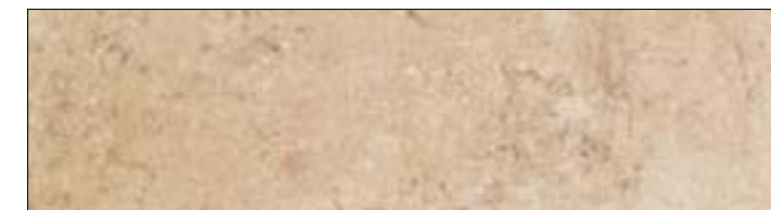
**Image 16: Awning Fabric.** "Mahogany" Style #4667



**Image 14: Option 1.** Similar to Image 13, but with a simplified cornice.



**Image 15: Option 1.** Otherwise similar to Images 13 and 14, this proposal replaces damaged or lost terra-cotta units on the lower portion of the building with porcelain tile, a sample of which is depicted in Image 17.



**Image 17: Tile.** American Olean Yellow Mars SL52



Design assistance for:  
**Connie Swanson  
 Photography**  
**Connie Swanson**  
 209 West 3rd Street  
 Grand Island, NE 68801

Produced under the direction of:  
**Nebraska Lied Main Street**  
 P.O. Box 83107  
 Lincoln, 68501-3107  
 Phone: 402.323.7337 Fax: 402.323.7349

Project Code:  
**G R I 0 7 0 1**  
 Date:  
**3 July 2007**

Sheet No.:  
**6 / 9**



**DISCLAIMER:**

The Nebraska Lied Main Street Program provides this nominal charge design assistance to property owners in officially designated Main Street project areas. The renderings and notations on these sheets are only conceptual views of the project site and are based on the information supplied to the design staff. Should obscured architectural details or problems be revealed, the local Main Street manager should be notified and consulted. General notes are provided as a guideline for preservation and revitalization techniques and are generally based on the Secretary of the Department of Interior's Standards for Historic Preservation. A copy of this publication may be viewed at the local project manager's office. For further information regarding incentive tax credits or issues regarding clarification of the Secretary of the Interior's Standards call the Nebraska State Historic Preservation Office of the Nebraska Historical Society. For more detailed technical assistance of product information, the state Main Street office has compiled lists of architects, engineers, preservation consultants, contractors, and product manufacturers who have expressed an interest in the Main Street Program. Since the Nebraska Lied Main Street Program is unable to endorse these entities, it is recommended that the building owners thoroughly check all references before engaging such contacts. These resource lists may be obtained through the local community manager's office. The work here takes no specific consideration of local building codes, fire ordinances, municipal zoning codes, and items relevant to the federal "Americans with Disabilities Act." Wherever pertinent these regulations always will supercede the intentions of the conceptual proposal illustrated here. Where applicable, all work must be approved by the local Main Street design review committee.



**Image 18: Option 2.** The former transom window and signboard opening has been replaced with porcelain tile, a sample of which is depicted in Image 17. The signage is black flat cut metal in Arial font available from Gemini (<http://www.signletters.com>). The custom logo would be made using flat cut metal.



**Image 19: Option 2.** Cylinders' 300 LINE Enclosed Uplights are used to illuminate the building's terra-cotta details.



**Image 20: Option 2.** Otherwise similar to Images 18 and 19, this proposal replaces damaged or lost terra-cotta units on the lower portion of the building with porcelain tile, a sample of which is depicted in Image 17.



Design assistance for:

**Connie Swanson  
Photography  
Connie Swanson**  
209 West 3rd Street  
Grand Island, NE 68801

Produced under the direction of:

**Nebraska Lied Main Street**  
P.O. Box 83107  
Lincoln, 68501-3107  
Phone: 402.323.7337 Fax: 402.323.7349

Project Code:

**G R I 0 7 0 1**

Date:

**3 July 2007**

Sheet No.:

**7 / 9**



**DISCLAIMER:**

The Nebraska Lied Main Street Program provides this nominal charge design assistance to property owners in officially designated Main Street project areas. The renderings and notations on these sheets are only conceptual views of the project site and are based on the information supplied to the design staff. Should obscured architectural details or problems be revealed, the local Main Street manager should be notified and consulted. General notes are provided as a guideline for preservation and revitalization techniques and are generally based on the Secretary of the Department of Interior's Standards for Historic Preservation. A copy of this publication may be viewed at the local project manager's office. For further information regarding incentive tax credits or issues regarding clarification of the Secretary of the Interior's Standards call the Nebraska State Historic Preservation Office of the Nebraska Historical Society. For more detailed technical assistance of product information, the state Main Street office has compiled lists of architects, engineers, preservation consultants, contractors, and product manufacturers who have expressed an interest in the Main Street Program. Since the Nebraska Lied Main Street Program is unable to endorse these entities, it is recommended that the building owners thoroughly check all references before engaging such contacts. These resource lists may be obtained through the local community manager's office. The work here takes no specific consideration of local building codes, fire ordinances, municipal zoning codes, and items relevant to the federal "Americans with Disabilities Act." Wherever pertinent these regulations always will supercede the intentions of the conceptual proposal illustrated here. Where applicable, all work must be approved by the local Main Street design review committee.



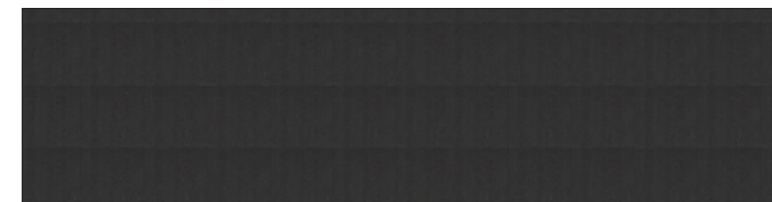
**Image 21: Option 3.** The former transom window and signboard opening has been replaced with porcelain tile, a sample of which is depicted in Image 17. The signage is flat cut metal in Times Roman font available from Gemini (<http://www.signletters.com>). The custom logo would be made using flat cut metal.



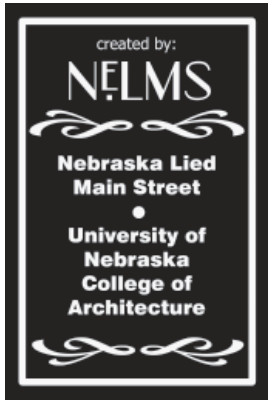
**Image 22: Option 3.** This proposal suggests flat cut metal in Avant Garde Medium font available from Gemini (<http://www.signletters.com>) for the signage. SPJ Lighting's Aluminum Sign Lights (SPJ51-05) are used to illuminate the signage.



**Image 23: Option 3.** This proposal replaces damaged or lost terra-cotta units on the lower portion of the building with porcelain tile, a sample of which is depicted in Image 24. The signage is flat cut metal in Times Roman font available from Gemini (<http://www.signletters.com>).



**Image 24: Tile.** Fiordo Ocean Cambrian Levigato



Design assistance for:  
**Connie Swanson**  
**Photography**  
**Connie Swanson**  
 209 West 3rd Street  
 Grand Island, NE 68801

Produced under the direction of:  
**Nebraska Lied Main Street**  
 P.O. Box 83107  
 Lincoln, 68501-3107  
 Phone: 402.323.7337 Fax: 402.323.7349

Project Code:  
**G R I 0 7 0 1**  
 Date:  
**3 July 2007**

Sheet No.:  
**8 / 9**



**DISCLAIMER :**

The Nebraska Lied Main Street Program provides this nominal charge design assistance to property owners in officially designated Main Street project areas. The renderings and notations on these sheets are only conceptual views of the project site and are based on the information supplied to the design staff. Should obscured architectural details or problems be revealed, the local Main Street manager should be notified and consulted. General notes are provided as a guideline for preservation and revitalization techniques and are generally based on the Secretary of the Department of Interior's Standards for Historic Preservation. A copy of this publication may be viewed at the local project manager's office. For further information regarding incentive tax credits or issues regarding clarification of the Secretary of the Interior's Standards call the Nebraska State Historic Preservation Office of the Nebraska Historical Society. For more detailed technical assistance of product information, the state Main Street office has compiled lists of architects, engineers, preservation consultants, contractors, and product manufacturers who have expressed an interest in the Main Street Program. Since the Nebraska Lied Main Street Program is unable to endorse these entities, it is recommended that the building owners thoroughly check all references before engaging such contacts. These resource lists may be obtained through the local community manager's office. The work here takes no specific consideration of local building codes, fire ordinances, municipal zoning codes, and items relevant to the federal "Americans with Disabilities Act." Wherever pertinent these regulations always will supercede the intentions of the conceptual proposal illustrated here. Where applicable, all work must be approved by the local Main Street design review committee.



**Image 25: Option 4.** The former transom window and signboard opening has been covered with an awning fabricated with Sunbrella's "Logo Red" (style 4666) fabric, a sample of which is depicted in image 28. Signage has been applied with graphic film directly onto the awning fabric with Arial font.



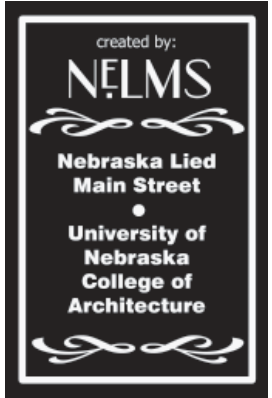
**Image 28: Awning Fabric.** "Logo Red" Style #4666



**Image 26: Option 4.** Otherwise similar to Image 25, this proposal suggests that different signage be applied with graphic film directly onto the awning fabric with Times Roman font.



**Image 27: Option 4.** Otherwise similar to Image 26, this proposal replaces damaged or lost terra-cotta units on the lower portion of the building with porcelain tile, a sample of which is depicted in Image 17.



Design assistance for:  
**Connie Swanson  
Photography**  
**Connie Swanson**  
209 West 3rd Street  
Grand Island, NE 68801

Produced under the direction of:  
**Nebraska Lied Main Street**  
P.O. Box 83107  
Lincoln, 68501-3107  
Phone: 402.323.7337 Fax: 402.323.7349

Project Code:  
**G R I 0 7 0 1**  
Date:  
**3 July 2007**

Sheet No.:  
**9 / 9**