

DISCLAIMER :

The Nebraska Lied Main Street Program provides this nominal charge design assistance to property owners in officially designated Main Street project areas. The renderings and notations on these sheets are only conceptual views of the project site and are based on the information supplied to the design staff. Should obscured architectural details or problems be revealed, the local Main Street manager should be notified and consulted. General notes are provided as a guideline for preservation and revitalization techniques and are generally based on the Secretary of the Department of Interior's Standards for Historic Preservation. A copy of this publication may be viewed at the local project manager's office. For further information regarding incentive tax credits or issues regarding clarification of the Secretary of the Interior's Standards call the Nebraska State Historic Preservation Office of the Nebraska Historical Society. For more detailed technical assistance of product information, the state Main Street office has compiled lists of architects, engineers, preservation consultants, contractors, and product manufacturers who have expressed an interest in the Main Street Program. Since the Nebraska Lied Main Street Program is unable to endorse these entities, it is recommended that the building owners thoroughly check all references before engaging such contacts. These resource lists may be obtained through the local community manager's office. The work here takes no specific consideration of local building codes, fire ordinances, municipal zoning codes, and items relevant to the federal "Americans with Disabilities Act." Wherever pertinent these regulations always will supercede the intentions of the conceptual proposal illustrated here. Where applicable, all work must be approved by the local Main Street design review committee.



Image 1. Existing Condition (Northeast Corner): A garage door and two windows have been replaced with infill on the north facade and two doors and a window have similarly been infilled on the east facade.



Image 2. Existing Condition (North Facade): Peeling paint and spalling brick can be seen at the roof level and near the ground on the north facade. The building's signage is also in a state of disrepair.

The existing Kevin's Custom Electric building shows a need for improvement in several areas. Problems addressed in these proposals include:

- Peeling paint and spalling brick
- Deteriorated signage
- Inadequate exterior lighting
- Doors and windows inconsistent in style
- Three windows, two doors and a garage door awkwardly infilled



Design assistance for:
Kevin's Custom Electric
Kevin Lafler
515 Illinois Street
Sidney, NE 69162

Produced under the direction of:
Nebraska Lied Main Street
P.O. Box 83107
Lincoln, 68501-3107
Phone: 402.323.7337 Fax: 402.323.7349

Notes:

Paint colors specified, unless noted otherwise, are produced by Pratt & Lambert.

All glass is to be clear (untinted).

Signage specified is available from Gemini. (<http://www.signletters.com/>)

Project Code:
SDY0702
Date:
12JUL2007

Sheet No.:
1/5

DISCLAIMER:

The Nebraska Lied Main Street Program provides this nominal charge design assistance to property owners in officially designated Main Street project areas. The renderings and notations on these sheets are only conceptual views of the project site and are based on the information supplied to the design staff. Should obscured architectural details or problems be revealed, the local Main Street manager should be notified and consulted. General notes are provided as a guideline for preservation and revitalization techniques and are generally based on the Secretary of the Department of Interior's Standards for Historic Preservation. A copy of this publication may be viewed at the local project manager's office. For further information regarding incentive tax credits or issues regarding clarification of the Secretary of the Interior's Standards call the Nebraska State Historic Preservation Office of the Nebraska Historical Society. For more detailed technical assistance of product information, the state Main Street office has compiled lists of architects, engineers, preservation consultants, contractors, and product manufacturers who have expressed an interest in the Main Street Program. Since the Nebraska Lied Main Street Program is unable to endorse these entities, it is recommended that the building owners thoroughly check all references before engaging such contacts. These resource lists may be obtained through the local community manager's office. The work here takes no specific consideration of local building codes, fire ordinances, municipal zoning codes, and items relevant to the federal "Americans with Disabilities Act." Wherever pertinent these regulations always will supercede the intentions of the conceptual proposal illustrated here. Where applicable, all work must be approved by the local Main Street design review committee.



Image 3. Option 1 (Northeast Corner): New bronze window frames and doors are installed. The garage doors and east facade door infills are painted similar to the color "Gentry Gray" (#2317) and window infill is painted similar to the color "Lava" (#2318). The brick is painted similar to the color "Angel Wings" (#1016). Aluminum flashing has been added along the top of the parapet wall. The gooseneck lamp is illustrated in Image 4, and the awning fabric is shown in Image 6.



Image 5. Option 1 (North Facade): The signage on the storefront is dark gray, formed plastic, Consort font.



Image 4: Gooseneck sign light with angled reflector #23850 by Primelite, powder coated black finish. 16" diameter.



Image 6: Sunbrella fabric sample "Forest Green Regimental" (#4963).



Design assistance for:
Kevin's Custom Electric
Kevin Lafler
 515 Illinois Street
 Sidney, NE 69162

Produced under the direction of:
Nebraska Lied Main Street
 P.O. Box 83107
 Lincoln, 68501-3107
 Phone: 402.323.7337 Fax: 402.323.7349

Project Code:
SDY0702
 Date:
12JUL2007

Sheet No.:
2 / 5

DISCLAIMER :

The Nebraska Lied Main Street Program provides this nominal charge design assistance to property owners in officially designated Main Street project areas. The renderings and notations on these sheets are only conceptual views of the project site and are based on the information supplied to the design staff. Should obscured architectural details or problems be revealed, the local Main Street manager should be notified and consulted. General notes are provided as a guideline for preservation and revitalization techniques and are generally based on the Secretary of the Department of Interior's Standards for Historic Preservation. A copy of this publication may be viewed at the local project manager's office. For further information regarding incentive tax credits or issues regarding clarification of the Secretary of the Interior's Standards call the Nebraska State Historic Preservation Office of the Nebraska Historical Society. For more detailed technical assistance of product information, the state Main Street office has compiled lists of architects, engineers, preservation consultants, contractors, and product manufacturers who have expressed an interest in the Main Street Program. Since the Nebraska Lied Main Street Program is unable to endorse these entities, it is recommended that the building owners thoroughly check all references before engaging such contacts. These resource lists may be obtained through the local community manager's office. The work here takes no specific consideration of local building codes, fire ordinances, municipal zoning codes, and items relevant to the federal "Americans with Disabilities Act." Wherever pertinent these regulations always will supercede the intentions of the conceptual proposal illustrated here. Where applicable, all work must be approved by the local Main Street design review committee.



Image 7. Option 2 (Northeast Corner): New aluminum windows and doors are installed. The garage door and remaining infills are painted similar to "Duckling" paint color (#1267). The brick is painted similar to "Starlight" paint color (#1251). Aluminum flashing has been added along the top of the parapet wall. The lamps are illustrated in Image 8, and the awning fabric is shown in Image 10.



Image 9. Option 2 (North Facade): The signage on the storefront is dark gray, formed plastic, Eurostyle Bold Extended Italic font.



Image 8: (Top) Progress (#P5641) downlight, metallic gray. 6" diameter. **(Bottom)** Abolite Harbor (#HBR 20"), painted natural aluminum finish. 20" diameter, gooseneck #GB B 3 GWT.

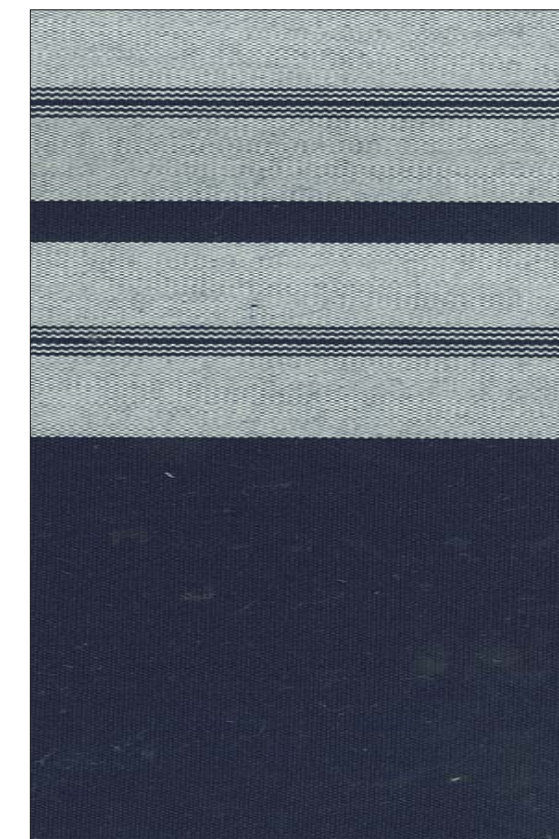


Image 10: Sunbrella fabric sample "Captain Navy" (#4902).



Design assistance for:
Kevin's Custom Electric
Kevin Lafler
515 Illinois Street
Sidney, NE 69162

Produced under the direction of:
Nebraska Lied Main Street
P.O. Box 83107
Lincoln, 68501-3107
Phone: 402.323.7337 Fax: 402.323.7349

Project Code:
SDY0702
Date:
12JUL2007

Sheet No.:
3 / 5

DISCLAIMER:

The Nebraska Lied Main Street Program provides this nominal charge design assistance to property owners in officially designated Main Street project areas. The renderings and notations on these sheets are only conceptual views of the project site and are based on the information supplied to the design staff. Should obscured architectural details or problems be revealed, the local Main Street manager should be notified and consulted. General notes are provided as a guideline for preservation and revitalization techniques and are generally based on the Secretary of the Department of Interior's Standards for Historic Preservation. A copy of this publication may be viewed at the local project manager's office. For further information regarding incentive tax credits or issues regarding clarification of the Secretary of the Interior's Standards call the Nebraska State Historic Preservation Office of the Nebraska Historical Society. For more detailed technical assistance of product information, the state Main Street office has compiled lists of architects, engineers, preservation consultants, contractors, and product manufacturers who have expressed an interest in the Main Street Program. Since the Nebraska Lied Main Street Program is unable to endorse these entities, it is recommended that the building owners thoroughly check all references before engaging such contacts. These resource lists may be obtained through the local community manager's office. The work here takes no specific consideration of local building codes, fire ordinances, municipal zoning codes, and items relevant to the federal "Americans with Disabilities Act." Wherever pertinent these regulations always will supercede the intentions of the conceptual proposal illustrated here. Where applicable, all work must be approved by the local Main Street design review committee.



Image 11. Option 3 (Northeast Corner): New bronze window frames and doors are installed. A new garage door is installed, and, along with the remaining infilled windows and door openings, it is painted similar to the color "Bayberry" (#2205). The brick is painted similar to the color "Classic Gray" (#2201). Aluminum flashing is added along the top of the parapet wall. The three infilled windows on the northeast corner of the building have the capital letters "K, C, E" painted on them in the font style of the signage to represent an abbreviation of the business name. The gooseneck lamp is illustrated in Image 12, and the awning fabric is shown in Image 14.



Image 13. Option 3 (North Facade): The signage on the storefront is dark gray, formed plastic, Optima SemiBold Extended Italic font.



Image 12: Vented Shade by American Nail Plate (#VW512), gloss bronze finish. 16" diameter, gooseneck.



Image 14: Sunbrella fabric sample "Captain Navy Regimental" (#4962).



Design assistance for:
Kevin's Custom Electric
Kevin Lafler
 515 Illinois Street
 Sidney, NE 69162

Produced under the direction of:
Nebraska Lied Main Street
 P.O. Box 83107
 Lincoln, 68501-3107
 Phone: 402.323.7337 Fax: 402.323.7349

Project Code:
SDY0702
 Date:
12JUL2007

Sheet No.:
4 / 5

DISCLAIMER:

The Nebraska Lied Main Street Program provides this nominal charge design assistance to property owners in officially designated Main Street project areas. The renderings and notations on these sheets are only conceptual views of the project site and are based on the information supplied to the design staff. Should obscured architectural details or problems be revealed, the local Main Street manager should be notified and consulted. General notes are provided as a guideline for preservation and revitalization techniques and are generally based on the Secretary of the Department of Interior's Standards for Historic Preservation. A copy of this publication may be viewed at the local project manager's office. For further information regarding incentive tax credits or issues regarding clarification of the Secretary of the Interior's Standards call the Nebraska State Historic Preservation Office of the Nebraska Historical Society. For more detailed technical assistance of product information, the state Main Street office has compiled lists of architects, engineers, preservation consultants, contractors, and product manufacturers who have expressed an interest in the Main Street Program. Since the Nebraska Lied Main Street Program is unable to endorse these entities, it is recommended that the building owners thoroughly check all references before engaging such contacts. These resource lists may be obtained through the local community manager's office. The work here takes no specific consideration of local building codes, fire ordinances, municipal zoning codes, and items relevant to the federal "Americans with Disabilities Act." Wherever pertinent these regulations always will supercede the intentions of the conceptual proposal illustrated here. Where applicable, all work must be approved by the local Main Street design review committee.



Image 15. Option 4 (Northeast Corner, Night Rendering): This option varies in two ways from Option 3. The position of the lighting fixtures remains the same, but the fixtures themselves are black and of a different style (see Image 16). The night view demonstrates the lighting used in this option. The letters for the signage on the north wall are made of cast metal to resist damage. The infilled windows on the northeast corner of the building include painted lettering and imagery. The gooseneck lamp is illustrated in Image 16.



Image 17. Option 5 (Northeast Corner): This option varies from Options 3 and 4 in that the lighting fixtures are a wall mounted type attached lower on the facade, and the signage, constructed of cast metal letters, has been lowered in order to be illuminated by these lights. The infilled windows on the northeast corner of the building have been left blank. The light fixture is illustrated in Image 17.



Image 16: Abolite Harbor (#HBR 20"), gloss black finish. 20" diameter, gooseneck #GB B 3 GWT.



Image 17: Craftsman Mission Lamps, Newport Exterior Wall Mount (Model K9733OZ), bronze finish. 19" H x 9" W x 11" D



Design assistance for:
Kevin's Custom Electric
Kevin Lafler
515 Illinois Street
Sidney, NE 69162

Produced under the direction of:
Nebraska Lied Main Street
P.O. Box 83107
Lincoln, 68501-3107
Phone: 402.323.7337 Fax: 402.323.7349

Project Code:
SDY0702
Date:
12JUL2007

Sheet No.:
5 / 5