



NEBRASKA MAIN STREET NETWORK

Design Case Studies

Chichihualco Supermarket & Meat Market

Project Sponsored By:



Fall 2021



Disclaimer

The Nebraska Main Street Network provides these design case studies as an educational tool for member communities. The illustrations are conceptual in nature only and take no specific consideration of local codes, standards, permit process or design review.



www.nebraskamainstreet.org

Chichihualco Supermarket
before previous façade
"improvement"

Former Alley



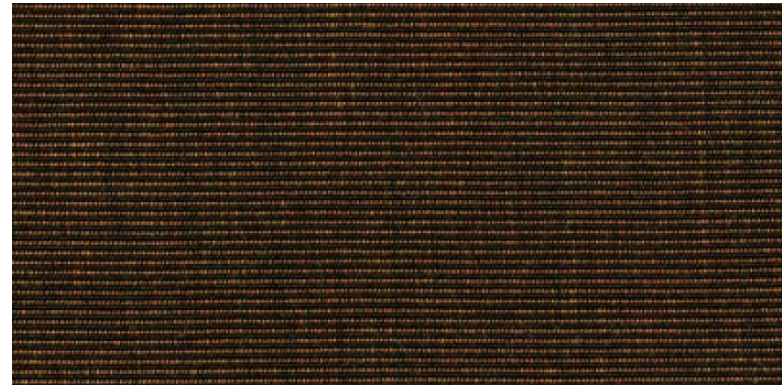
Paint Swatches (a sampling of tans)



Awning Swatches



Sunbrella Terra Cotta



Sunbrella Walnut Brown Tweed

The Nebraska Main Street Network provides these design case studies as an educational tool for member communities. The illustrations are conceptual in nature only and take no specific consideration of local codes, standards, permit process or design review.



Current Condition

Based on historic photo showing a single building; small building on left is infill in the former alley; brick color not exact and is only used to show what a brick façade based on the original would look like



The Nebraska Main Street Network provides these design case studies as an educational tool for member communities. The illustrations are conceptual in nature only and take no specific consideration of local codes, standards, permit process or design review.

Proposed Improvement



Current Condition



The Nebraska Main Street Network provides these design case studies as an educational tool for member communities. The illustrations are conceptual in nature only and take no specific consideration of local codes, standards, permit process or design review.



Examples of large scale storefront window graphics
(there are a variety of options out there, these are just examples)

The Nebraska Main Street Network provides these design case studies as an educational tool for member communities. The illustrations are conceptual in nature only and take no specific consideration of local codes, standards, permit process or design review.