

DISCLAIMER :

The Nebraska Lied Main Street Program provides this nominal charge design assistance to property owners in officially designated Main Street project areas. The renderings and notations on these sheets are only conceptual views of the project site and are based on the information supplied to the design staff. Should obscured architectural details or problems be revealed, the local Main Street manager should be notified and consulted. General notes are provided as a guideline for preservation and revitalization techniques and are generally based on the Secretary of the Department of Interior's Standards for Historic Preservation. A copy of this publication may be viewed at the local project manager's office. For further information regarding incentive tax credits or issues regarding clarification of the Secretary of the Interior's Standards call the Nebraska State Historic Preservation Office of the Nebraska Historical Society. For more detailed technical assistance of product information, the state Main Street office has compiled lists of architects, engineers, preservation consultants, contractors, and product manufacturers who have expressed an interest in the Main Street Program. Since the Nebraska Lied Main Street Program is unable to endorse these entities, it is recommended that the building owners thoroughly check all references before engaging such contacts. These resource lists may be obtained through the local community manager's office. The work here takes no specific consideration of local building codes, fire ordinances, municipal zoning codes, and items relevant to the federal "Americans with Disabilities Act." Wherever pertinent these regulations always will supercede the intentions of the conceptual proposal illustrated here. Where applicable, all work must be approved by the local Main Street design review committee.



Image 1: A one-story brick building with two storefronts (to the left in this photo) adjoins the north side of The Nebraska Signal building on the east side of North 9th Street in Geneva. The building is adjacent to the mid-block alleyway. Transom windows in both storefronts were covered in previous remodeling of the building. To enhance visibility of the facade of this building, the existing tree in front of the building (see Image 2) is shown removed, even though that is not recommended as part of the proposals.



Image 2: The existing west facade has a metal canopy extending across both storefronts.



Image 3: Existing storefronts.



Design assistance for:
The Nebraska Signal
John Edgecombe
P135 North 9th Street
Geneva, NE 68361

Produced under the direction of:
Nebraska Lied Main Street
P.O. Box 83107
Lincoln, 68501-3107
Phone: 402.323.7337 Fax: 402.323.7349

Project Code:
GNV0602
Date:
14 AUG 2006

Sheet No.:
1 / 5

DISCLAIMER :

The Nebraska Lied Main Street Program provides this nominal charge design assistance to property owners in officially designated Main Street project areas. The renderings and notations on these sheets are only conceptual views of the project site and are based on the information supplied to the design staff. Should obscured architectural details or problems be revealed, the local Main Street manager should be notified and consulted. General notes are provided as a guideline for preservation and revitalization techniques and are generally based on the Secretary of the Department of Interior's Standards for Historic Preservation. A copy of this publication may be viewed at the local project manager's office. For further information regarding incentive tax credits or issues regarding clarification of the Secretary of the Interior's Standards call the Nebraska State Historic Preservation Office of the Nebraska Historical Society. For more detailed technical assistance of product information, the state Main Street office has compiled lists of architects, engineers, preservation consultants, contractors, and product manufacturers who have expressed an interest in the Main Street Program. Since the Nebraska Lied Main Street Program is unable to endorse these entities, it is recommended that the building owners thoroughly check all references before engaging such contacts. These resource lists may be obtained through the local community manager's office. The work here takes no specific consideration of local building codes, fire ordinances, municipal zoning codes, and items relevant to the federal "Americans with Disabilities Act." Wherever pertinent these regulations always will supercede the intentions of the conceptual proposal illustrated here. Where applicable, all work must be approved by the local Main Street design review committee.

Painted signboard

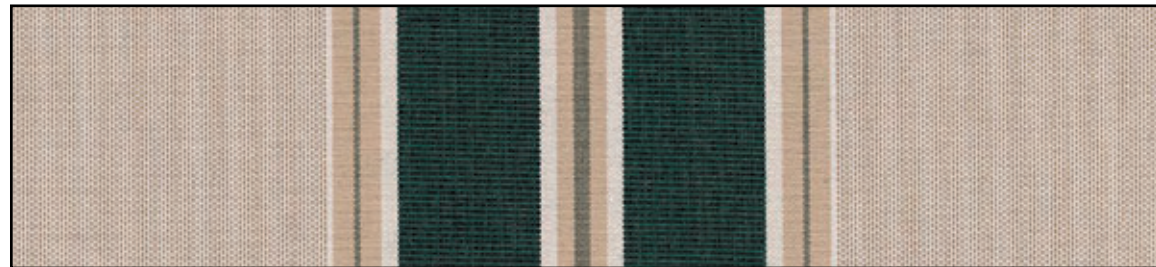


Awning with "Black Forest Fancy" (style #4923) Sunbrella fabric

Paneling removed and painted to match north storefront

Image 4. Option 1: The existing metal canopy is removed. Two adjoining awnings with Sunbrella's "Black Forest Fancy" (style # 4923) fabric are installed. Painted signboards are mounted in the indentations above the two storefronts.

Image 6: "Black Forest Fancy" (style # 4923) Sunbrella fabric sample



Signage on valance

Awning with "Black Forest Fancy" (style #4923) Sunbrella fabric

Paneling removed and painted to match north storefront

Image 5. Option 2: This option depicts signage on the awning valances instead of signboards.

Note: It is not intended that the existing tree in front of the building should be removed; it has only been erased to make the design proposals for the facade visible.



Design assistance for:
The Nebraska Signal
John Edgecombe
 135 North 9th Street
 Geneva, NE 68361

Produced under the direction of:
Nebraska Lied Main Street
 P.O. Box 83107
 Lincoln, 68501-3107
 Phone: 402.323.7337 Fax: 402.323.7349

Project Code:
GNV0602
 Date:
14 AUG 2006

Sheet No.:
2 / 5

DISCLAIMER :

The Nebraska Lied Main Street Program provides this nominal charge design assistance to property owners in officially designated Main Street project areas. The renderings and notations on these sheets are only conceptual views of the project site and are based on the information supplied to the design staff. Should obscured architectural details or problems be revealed, the local Main Street manager should be notified and consulted. General notes are provided as a guideline for preservation and revitalization techniques and are generally based on the Secretary of the Department of Interior's Standards for Historic Preservation. A copy of this publication may be viewed at the local project manager's office. For further information regarding incentive tax credits or issues regarding clarification of the Secretary of the Interior's Standards call the Nebraska State Historic Preservation Office of the Nebraska Historical Society. For more detailed technical assistance of product information, the state Main Street office has compiled lists of architects, engineers, preservation consultants, contractors, and product manufacturers who have expressed an interest in the Main Street Program. Since the Nebraska Lied Main Street Program is unable to endorse these entities, it is recommended that the building owners thoroughly check all references before engaging such contacts. These resource lists may be obtained through the local community manager's office. The work here takes no specific consideration of local building codes, fire ordinances, municipal zoning codes, and items relevant to the federal "Americans with Disabilities Act." Wherever pertinent these regulations always will supercede the intentions of the conceptual proposal illustrated here. Where applicable, all work must be approved by the local Main Street design review committee.

Painted signboard



Awning with "Black" (style #4608) Sunbrella fabric

Paneling removed and painted to match north storefront.

Image 7. Option 3: The existing metal canopy is removed. Two adjoining awnings with Sunbrella's "Black" (style # 4608) fabric are installed. Painted signboards are mounted in the indentations above the two storefronts.

Image 9: "Black" (style #4608) Sunbrella fabric sample



Signage on valance

Awning with "Black" (style #4608) Sunbrella fabric

Paneling removed and painted to match north storefront

Image 8. Option 4: This option depicts signage on the awning valances instead of signboards.

Note: It is not intended that the existing tree in front of the building should be removed; it has only been erased to make the design proposals for the facade visible.



Design assistance for:
The Nebraska Signal
John Edgecombe
 135 North 9th Street
 Geneva, NE 68361

Produced under the direction of:
Nebraska Lied Main Street
 P.O. Box 83107
 Lincoln, 68501-3107
 Phone: 402.323.7337 Fax: 402.323.7349

Project Code:
GNV0602
 Date:
14 AUG 2006

Sheet No.:
3 / 5

DISCLAIMER :

The Nebraska Lied Main Street Program provides this nominal charge design assistance to property owners in officially designated Main Street project areas. The renderings and notations on these sheets are only conceptual views of the project site and are based on the information supplied to the design staff. Should obscured architectural details or problems be revealed, the local Main Street manager should be notified and consulted. General notes are provided as a guideline for preservation and revitalization techniques and are generally based on the Secretary of the Department of Interior's Standards for Historic Preservation. A copy of this publication may be viewed at the local project manager's office. For further information regarding incentive tax credits or issues regarding clarification of the Secretary of the Interior's Standards call the Nebraska State Historic Preservation Office of the Nebraska Historical Society. For more detailed technical assistance of product information, the state Main Street office has compiled lists of architects, engineers, preservation consultants, contractors, and product manufacturers who have expressed an interest in the Main Street Program. Since the Nebraska Lied Main Street Program is unable to endorse these entities, it is recommended that the building owners thoroughly check all references before engaging such contacts. These resource lists may be obtained through the local community manager's office. The work here takes no specific consideration of local building codes, fire ordinances, municipal zoning codes, and items relevant to the federal "Americans with Disabilities Act." Wherever pertinent these regulations always will supercede the intentions of the conceptual proposal illustrated here. Where applicable, all work must be approved by the local Main Street design review committee.

Painted signboard



Awning with "Navy" (style #4626) Sunbrella fabric

Paneling removed and painted to match north storefront

Image 10. Option 5: The existing metal canopy is removed. Two adjoining awnings with Sunbrella's "Navy" (style # 4626) fabric are installed. Painted signboards are mounted in the indentations above the two storefronts.

Image 12: "Navy" (style #4626) Sunbrella fabric sample



Signage on valance

Awning with "Navy" (style #4626) Sunbrella fabric

Paneling removed and painted to match north storefront

Image 11. Option 6: This option depicts signage on the awning valances instead of signboards.

Note: It is not intended that the existing tree in front of the building should be removed; it has only been erased to make the design proposals for the facade visible.



Design assistance for:

The Nebraska Signal
John Edgecombe
 135 North 9th Street
 Geneva, NE 68361

Produced under the direction of:

Nebraska Lied Main Street
 P.O. Box 83107
 Lincoln, 68501-3107
 Phone: 402.323.7337 Fax: 402.323.7349

Project Code:
GNV0602
 Date:
14 AUG 2006

Sheet No.:
4 / 5

DISCLAIMER :

The Nebraska Lied Main Street Program provides this nominal charge design assistance to property owners in officially designated Main Street project areas. The renderings and notations on these sheets are only conceptual views of the project site and are based on the information supplied to the design staff. Should obscured architectural details or problems be revealed, the local Main Street manager should be notified and consulted. General notes are provided as a guideline for preservation and revitalization techniques and are generally based on the Secretary of the Department of Interior's Standards for Historic Preservation. A copy of this publication may be viewed at the local project manager's office. For further information regarding incentive tax credits or issues regarding clarification of the Secretary of the Interior's Standards call the Nebraska State Historic Preservation Office of the Nebraska Historical Society. For more detailed technical assistance of product information, the state Main Street office has compiled lists of architects, engineers, preservation consultants, contractors, and product manufacturers who have expressed an interest in the Main Street Program. Since the Nebraska Lied Main Street Program is unable to endorse these entities, it is recommended that the building owners thoroughly check all references before engaging such contacts. These resource lists may be obtained through the local community manager's office. The work here takes no specific consideration of local building codes, fire ordinances, municipal zoning codes, and items relevant to the federal "Americans with Disabilities Act." Wherever pertinent these regulations always will supercede the intentions of the conceptual proposal illustrated here. Where applicable, all work must be approved by the local Main Street design review committee.

Painted signboard.

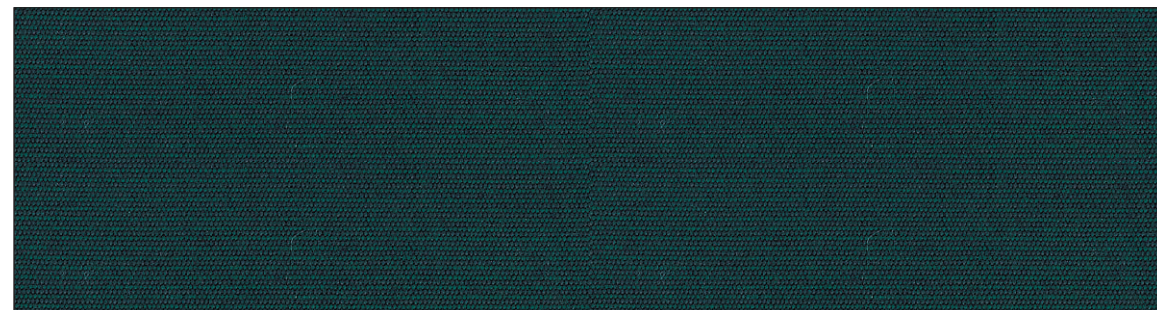


Awning with "Spruce" (style #4656) Sunbrella fabric

Paneling removed and painted to match north storefront

Image 13. Option 7: The existing metal canopy is removed. Two adjoining awnings with Sunbrella's "Spruce" (style # 4656) fabric are installed. Painted signboards are mounted in the indentations above the two storefronts.

Image 15: "Spruce" (style #4656) Sunbrella fabric sample



Signage on valance

Awning with "Spruce" (style #4656) Sunbrella fabric

Paneling removed and painted to match north storefront

Image 14. Option 8: This option depicts signage on the awning valances instead of signboards.

Note: It is not intended that the existing tree in front of the building should be removed; it has only been erased to make the design proposals for the facade visible.



Design assistance for:

The Nebraska Signal
John Edgecombe
 135 North 9th Street
 Geneva, NE 68361

Produced under the direction of:

Nebraska Lied Main Street
 P.O. Box 83107
 Lincoln, 68501-3107
 Phone: 402.323.7337 Fax: 402.323.7349

Project Code:
GNV0602
 Date:
14 AUG 2006

Sheet No.:
5 / 5