

DISCLAIMER :

The Nebraska Lied Main Street Program provides this nominal charge design assistance to property owners in officially designated Main Street project areas. The renderings and notations on these sheets are only conceptual views of the project site and are based on the information supplied to the design staff. Should obscured architectural details or problems be revealed, the local Main Street manager should be notified and consulted. General notes are provided as a guideline for preservation and revitalization techniques and are generally based on the Secretary of the Department of Interior's Standards for Historic Preservation. A copy of this publication may be viewed at the local project manager's office. For further information regarding incentive tax credits or issues regarding clarification of the Secretary of the Interior's Standards call the Nebraska State Historic Preservation Office of the Nebraska Historical Society. For more detailed technical assistance of product information, the state Main Street office has compiled lists of architects, engineers, preservation consultants, contractors, and product manufacturers who have expressed an interest in the Main Street Program. Since the Nebraska Lied Main Street Program is unable to endorse these entities, it is recommended that the building owners thoroughly check all references before engaging such contacts. These resource lists may be obtained through the local community manager's office. The work here takes no specific consideration of local building codes, fire ordinances, municipal zoning codes, and items relevant to the federal "Americans with Disabilities Act." Wherever pertinent these regulations always will supercede the intentions of the conceptual proposal illustrated here. Where applicable, all work must be approved by the local Main Street design review committee.



Image 1. Existing Condition (East Facade): The owner of Inspiration Christian Book & Gift is suggesting the potential addition of an awning to enhance the aesthetics of the building as well as to reduce the cooling load. Recommendations for new, attractive signage are also sought.



Image 2. Existing Condition (Southeast View): In addition to providing shade, an awning would add an element of depth to a largely flat facade.

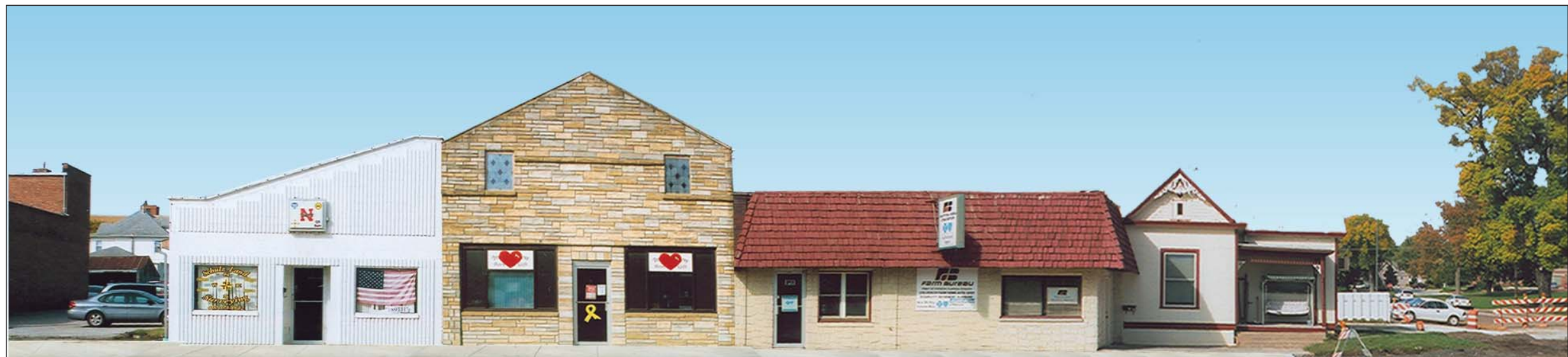


Image 3. Existing Condition (Streetscape): A new awning and signage could strengthen the visual presence and image of the business.



Design assistance for:
**Inspiration Christian
Book & Gift**
Kaye McAfee
316 Main Street
Wayne, NE 68787

Produced under the direction of:
Nebraska Lied Main Street
P.O. Box 83107
Lincoln, 68501-3107
Phone: 402.323.7337 Fax: 402.323.7349

Project Code:
WYN0701
Date:
12 JUL 2007

Sheet No.:
1 / 3

DISCLAIMER:

The Nebraska Lied Main Street Program provides this nominal charge design assistance to property owners in officially designated Main Street project areas. The renderings and notations on these sheets are only conceptual views of the project site and are based on the information supplied to the design staff. Should obscured architectural details or problems be revealed, the local Main Street manager should be notified and consulted. General notes are provided as a guideline for preservation and revitalization techniques and are generally based on the Secretary of the Department of Interior's Standards for Historic Preservation. A copy of this publication may be viewed at the local project manager's office. For further information regarding incentive tax credits or issues regarding clarification of the Secretary of the Interior's Standards call the Nebraska State Historic Preservation Office of the Nebraska Historical Society. For more detailed technical assistance of product information, the state Main Street office has compiled lists of architects, engineers, preservation consultants, contractors, and product manufacturers who have expressed an interest in the Main Street Program. Since the Nebraska Lied Main Street Program is unable to endorse these entities, it is recommended that the building owners thoroughly check all references before engaging such contacts. These resource lists may be obtained through the local community manager's office. The work here takes no specific consideration of local building codes, fire ordinances, municipal zoning codes, and items relevant to the federal "Americans with Disabilities Act." Wherever pertinent these regulations always will supercede the intentions of the conceptual proposal illustrated here. Where applicable, all work must be approved by the local Main Street design review committee.



Image 4. Option 1 (East Facade): The awning has closed sides and a 9" valance. The awning projection is similar to that of the adjacent building's roof and aligns with the edge of this roof. The awning fabric is shown in Image 7. The upper-story windows have been replaced and/or cleaned so that the existing painted images on the Plexiglas are removed. Window frames are added to the upper-story windows. (Images 8 and 9 depict the same awning that is described above.)



Image 6: Friz Quadrata font. The signboard background color is navy, similar to the color of the awning fabric (Image 7). Lettering on the sign is beige.



Image 5. Option 1 (Southeast View): A new signboard is located above the awning, and the existing signs in the windows are removed. Beige vinyl lettering in the same fonts used for the signboard (see Image 6) is appliquéd to both windows. (Images 8 and 9 reflect the same changes made in this option, except for variations in the signboard.)



Image 7: "Navy" (#4626) Sunbrella fabric.



Design assistance for:
Inspiration Christian Book & Gift
Kaye McAfee
 316 Main Street
 Wayne, NE 68787

Produced under the direction of:
Nebraska Lied Main Street
 P.O. Box 83107
 Lincoln, 68501-3107
 Phone: 402.323.7337 Fax: 402.323.7349

Project Code:
WYN0701
 Date:
12 JUL 2007

Sheet No.:
2 / 3

DISCLAIMER:

The Nebraska Lied Main Street Program provides this nominal charge design assistance to property owners in officially designated Main Street project areas. The renderings and notations on these sheets are only conceptual views of the project site and are based on the information supplied to the design staff. Should obscured architectural details or problems be revealed, the local Main Street manager should be notified and consulted. General notes are provided as a guideline for preservation and revitalization techniques and are generally based on the Secretary of the Department of Interior's Standards for Historic Preservation. A copy of this publication may be viewed at the local project manager's office. For further information regarding incentive tax credits or issues regarding clarification of the Secretary of the Interior's Standards call the Nebraska State Historic Preservation Office of the Nebraska Historical Society. For more detailed technical assistance of product information, the state Main Street office has compiled lists of architects, engineers, preservation consultants, contractors, and product manufacturers who have expressed an interest in the Main Street Program. Since the Nebraska Lied Main Street Program is unable to endorse these entities, it is recommended that the building owners thoroughly check all references before engaging such contacts. These resource lists may be obtained through the local community manager's office. The work here takes no specific consideration of local building codes, fire ordinances, municipal zoning codes, and items relevant to the federal "Americans with Disabilities Act." Wherever pertinent these regulations always will supercede the intentions of the conceptual proposal illustrated here. Where applicable, all work must be approved by the local Main Street design review committee.



Image 8. Option 2 (East Facade): The awning is the same as described for Option 1 (Images 4, 5, and 7). The signboard is depicted in Image 10. The fonts for the vinyl lettering appliqué to the windows are the same as used for the signboard.

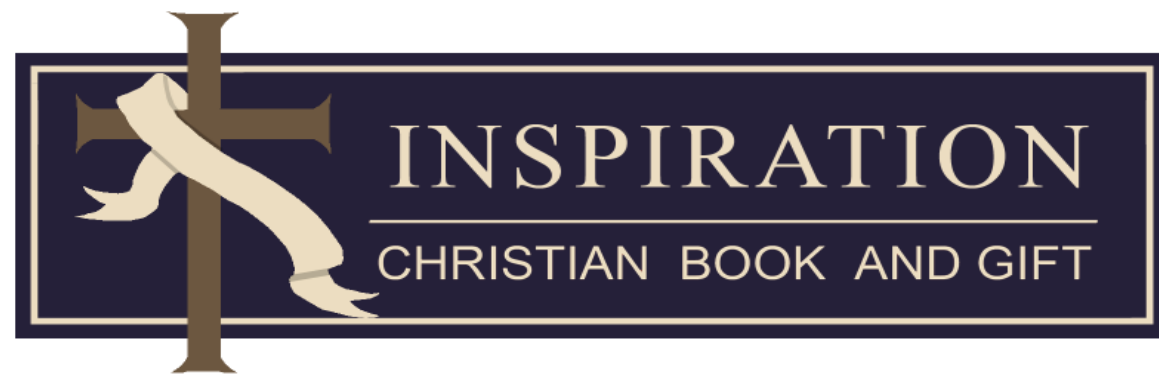


Image 10: Times New Roman/ Arial fonts. The signboard background color is navy, similar to the color of the awning fabric (Image 7). Lettering on the sign is beige.



Image 9. Option 3 (East Facade): The awning is the same as described for Option 1 (Images 4, 5, and 7). The signboard is depicted in Image 11. The fonts for the vinyl lettering appliqué to the windows are the same as used for the signboard.

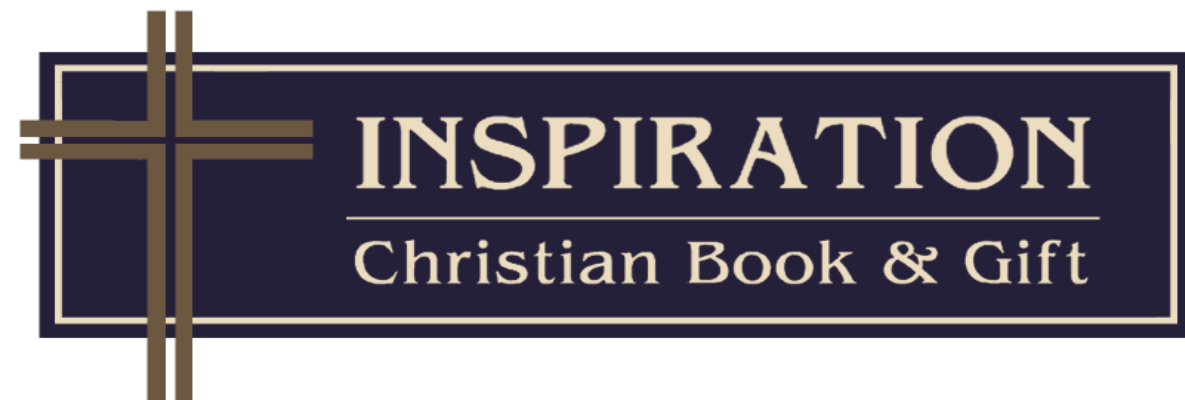


Image 11: Benquiat font. The signboard background color is navy, similar to the color of the awning fabric (Image 7). Lettering on the sign is beige.



Design assistance for:
Inspiration Christian Book & Gift
Kaye McAfee
 316 Main Street
 Wayne, NE 68787

Produced under the direction of:
Nebraska Lied Main Street
 P.O. Box 83107
 Lincoln, 68501-3107
 Phone: 402.323.7337 Fax: 402.323.7349

Project Code:
WYN0701
 Date:
12 JUL 2007

Sheet No.:
3 / 3