

DISCLAIMER :

The Nebraska Lied Main Street Program provides this nominal charge design assistance to property owners in officially designated Main Street project areas. The renderings and notations on these sheets are only conceptual views of the project site and are based on the information supplied to the design staff. Should obscured architectural details or problems be revealed, the local Main Street manager should be notified and consulted. General notes are provided as a guideline for preservation and revitalization techniques and are generally based on the Secretary of the Department of Interior's Standards for Historic Preservation. A copy of this publication may be viewed at the local project manager's office. For further information regarding incentive tax credits or issues regarding clarification of the Secretary of the Interior's Standards call the Nebraska State Historic Preservation Office of the Nebraska Historical Society. For more detailed technical assistance of product information, the state Main Street office has compiled lists of architects, engineers, preservation consultants, contractors, and product manufacturers who have expressed an interest in the Main Street Program. Since the Nebraska Lied Main Street Program is unable to endorse these entities, it is recommended that the building owners thoroughly check all references before engaging such contacts. These resource lists may be obtained through the local community manager's office. The work here takes no specific consideration of local building codes, fire ordinances, municipal zoning codes, and items relevant to the federal "Americans with Disabilities Act." Wherever pertinent these regulations always will supercede the intentions of the conceptual proposal illustrated here. Where applicable, all work must be approved by the local Main Street design review committee.



Image 1. Existing Condition (Southeast Corner): Stucco or Exterior Insulation Finish System (EIFS), a synthetic stucco, will be added to the south facade to replace the metal siding to give the building a more cohesive materiality.



Image 2. Existing Condition (South Facade): The metal canopy and siding are to be removed. Existing windows, frames and mullions will be replaced. The double doors will be replaced with a single door and sidelight.

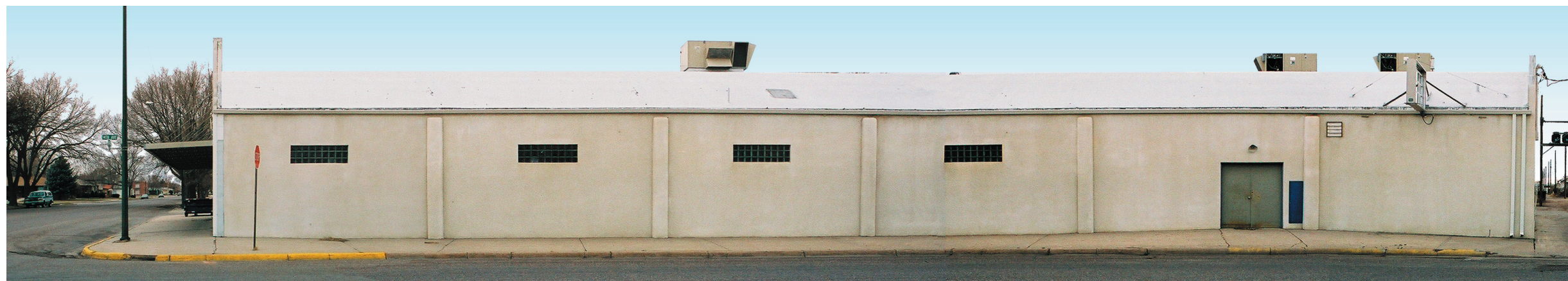


Image 3. Existing Condition (East Facade): A new window, door and sidelight are to be added to the southernmost bays. An overhead door is to replace the existing double doors and a new steel door will accompany it.

These photographs show the existing condition of the future Day & Night Plumbing & Heating building. The south facade, the building's main entrance, consists of metal siding, as well as a metal canopy which runs the entire length of the facade.

Building improvements are to include the addition of new south facade materials, awnings, new windows and doors, signage and lighting.

Five options for awning fabrics have been recommended as well as the use of perforMAX stone, yielding five options for the enhancement of the building.

Note: Rendered images representing the design options include the removal of the stop sign and light poles for the purpose of better representing the photograph/rendering.



Design assistance for:
Day & Night Plumbing & Heating
1400 Jackson Street
Sidney, NE 69162

Produced under the direction of:
Nebraska Lied Main Street
P.O. Box 83107
Lincoln, 68501-3107
Phone: 402.323.7337 Fax: 402.323.7349

Project Code:
SDY0701
Date:
25 MAY 2007

Sheet No.:
1/7

DISCLAIMER:

The Nebraska Lied Main Street Program provides this nominal charge design assistance to property owners in officially designated Main Street project areas. The renderings and notations on these sheets are only conceptual views of the project site and are based on the information supplied to the design staff. Should obscured architectural details or problems be revealed, the local Main Street manager should be notified and consulted. General notes are provided as a guideline for preservation and revitalization techniques and are generally based on the Secretary of the Department of Interior's Standards for Historic Preservation. A copy of this publication may be viewed at the local project manager's office. For further information regarding incentive tax credits or issues regarding clarification of the Secretary of the Interior's Standards call the Nebraska State Historic Preservation Office of the Nebraska Historical Society. For more detailed technical assistance of product information, the state Main Street office has compiled lists of architects, engineers, preservation consultants, contractors, and product manufacturers who have expressed an interest in the Main Street Program. Since the Nebraska Lied Main Street Program is unable to endorse these entities, it is recommended that the building owners thoroughly check all references before engaging such contacts. These resource lists may be obtained through the local community manager's office. The work here takes no specific consideration of local building codes, fire ordinances, municipal zoning codes, and items relevant to the federal "Americans with Disabilities Act." Wherever pertinent these regulations always will supercede the intentions of the conceptual proposal illustrated here. Where applicable, all work must be approved by the local Main Street design review committee.



Image 4. Option 1 (Southeast Corner): The stucco or EIFS is similar in color to Pratt & Lambert's "Flagstaff" paint color (#2264). Similarly colored material on both facades gives the building further cohesion. New doors and windows with dark, bronze frames have been added to the building. Gooseneck downlighting is used to illuminate the signage and south-facing awning.



Image 5. Option 1 (South Facade): The signage on the storefront is black, formed plastic, Roman Classic font available from Gemini (<http://www.signletters.com/>). PerforMAX stone, four feet in height, and stucco or EIFS replace the metal on the south facade. Additionally, aluminum flashing has been added along the top of the parapet wall.



Image 6. Option 1 (East Facade): A new window has been added, as well as a new door with sidelight. A new steel door and overhead door are also shown to the right.



Image 7: Black gooseneck signlight (#23850) by Primelite. 16" diameter.



Image 8: "Heather Beige-6 Bar" (#4956) Sunbrella fabric.



Design assistance for:
Day & Night Plumbing & Heating
 1400 Jackson Street
 Sidney, NE 69162

Produced under the direction of:
Nebraska Lied Main Street
 P.O. Box 83107
 Lincoln, 68501-3107
 Phone: 402.323.7337 Fax: 402.323.7349

Project Code:
SDY0701
 Date:
25 MAY 2007

Sheet No.:
2/7

DISCLAIMER :

The Nebraska Lied Main Street Program provides this nominal charge design assistance to property owners in officially designated Main Street project areas. The renderings and notations on these sheets are only conceptual views of the project site and are based on the information supplied to the design staff. Should obscured architectural details or problems be revealed, the local Main Street manager should be notified and consulted. General notes are provided as a guideline for preservation and revitalization techniques and are generally based on the Secretary of the Department of Interior's Standards for Historic Preservation. A copy of this publication may be viewed at the local project manager's office. For further information regarding incentive tax credits or issues regarding clarification of the Secretary of the Interior's Standards call the Nebraska State Historic Preservation Office of the Nebraska Historical Society. For more detailed technical assistance of product information, the state Main Street office has compiled lists of architects, engineers, preservation consultants, contractors, and product manufacturers who have expressed an interest in the Main Street Program. Since the Nebraska Lied Main Street Program is unable to endorse these entities, it is recommended that the building owners thoroughly check all references before engaging such contacts. These resource lists may be obtained through the local community manager's office. The work here takes no specific consideration of local building codes, fire ordinances, municipal zoning codes, and items relevant to the federal "Americans with Disabilities Act." Wherever pertinent these regulations always will supercede the intentions of the conceptual proposal illustrated here. Where applicable, all work must be approved by the local Main Street design review committee.



Image 9. Option 2 (Southeast Corner): The stucco or EIFS is similar in color to Pratt & Lambert's "River Sand" paint color (#2265). Smaller scale gooseneck downlighting is used to illuminate the signage.



Image 10. Option 2 (South Facade): The signage on the storefront is black, formed plastic, Times Bold Extended font available from Gemini. Stucco or EIFS replace the metal on the south facade. Additionally, aluminum flashing has been added along the top of the parapet wall.



Image 11. Option 2 (East Facade): A new window has been added, as well as a new door with sidelight. A new steel door and overhead door are also shown to the right.



Image 12: Gloss black gooseneck angled reflector (#AD150) by Abolite. 9" diameter.



Image 13: "Alpine Beige-6 Bar" (#4928) Sunbrella fabric.



Design assistance for:
**Day & Night
Plumbing & Heating**
1400 Jackson Street
Sidney, NE 69162

Produced under the direction of:
Nebraska Lied Main Street
P.O. Box 83107
Lincoln, 68501-3107
Phone: 402.323.7337 Fax: 402.323.7349

Project Code:
SDY0701
Date:
25 MAY 2007

Sheet No.:
3 / 7

DISCLAIMER:

The Nebraska Lied Main Street Program provides this nominal charge design assistance to property owners in officially designated Main Street project areas. The renderings and notations on these sheets are only conceptual views of the project site and are based on the information supplied to the design staff. Should obscured architectural details or problems be revealed, the local Main Street manager should be notified and consulted. General notes are provided as a guideline for preservation and revitalization techniques and are generally based on the Secretary of the Department of Interior's Standards for Historic Preservation. A copy of this publication may be viewed at the local project manager's office. For further information regarding incentive tax credits or issues regarding clarification of the Secretary of the Interior's Standards call the Nebraska State Historic Preservation Office of the Nebraska Historical Society. For more detailed technical assistance of product information, the state Main Street office has compiled lists of architects, engineers, preservation consultants, contractors, and product manufacturers who have expressed an interest in the Main Street Program. Since the Nebraska Lied Main Street Program is unable to endorse these entities, it is recommended that the building owners thoroughly check all references before engaging such contacts. These resource lists may be obtained through the local community manager's office. The work here takes no specific consideration of local building codes, fire ordinances, municipal zoning codes, and items relevant to the federal "Americans with Disabilities Act." Wherever pertinent these regulations always will supercede the intentions of the conceptual proposal illustrated here. Where applicable, all work must be approved by the local Main Street design review committee.



Image 14. Option 3 (Southeast Corner): The stucco or EIFS is similar in color to Pratt & Lambert's "Pebble" paint color (#2282). Gooseneck downlighting is used to illuminate the signage and south-facing awning.



Image 15. Option 3 (South Facade): The signage on the storefront is black, formed plastic, Microgramma Extended font available from Gemini. Stucco or EIFS replace the metal on the south facade. Additionally, aluminum flashing has been added along the top of the parapet wall.



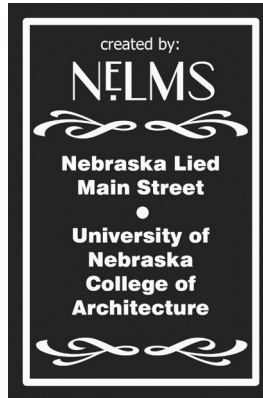
Image 16. Option 3 (East Facade): A new window has been added, as well as a new door with sidelight. A new steel door and overhead door are also shown to the right.



Image 17: Black gooseneck signlight (#23850) by Primelite. 16" diameter.



Image 18: "Navy" (#4626) Sunbrella fabric.



Design assistance for:
Day & Night Plumbing & Heating
 1400 Jackson Street
 Sidney, NE 69162

Produced under the direction of:
Nebraska Lied Main Street
 P.O. Box 83107
 Lincoln, 68501-3107
 Phone: 402.323.7337 Fax: 402.323.7349

Project Code:
SDY0701
 Date:
25 MAY 2007

Sheet No.:
4 / 7

DISCLAIMER:

The Nebraska Lied Main Street Program provides this nominal charge design assistance to property owners in officially designated Main Street project areas. The renderings and notations on these sheets are only conceptual views of the project site and are based on the information supplied to the design staff. Should obscured architectural details or problems be revealed, the local Main Street manager should be notified and consulted. General notes are provided as a guideline for preservation and revitalization techniques and are generally based on the Secretary of the Department of Interior's Standards for Historic Preservation. A copy of this publication may be viewed at the local project manager's office. For further information regarding incentive tax credits or issues regarding clarification of the Secretary of the Interior's Standards call the Nebraska State Historic Preservation Office of the Nebraska Historical Society. For more detailed technical assistance of product information, the state Main Street office has compiled lists of architects, engineers, preservation consultants, contractors, and product manufacturers who have expressed an interest in the Main Street Program. Since the Nebraska Lied Main Street Program is unable to endorse these entities, it is recommended that the building owners thoroughly check all references before engaging such contacts. These resource lists may be obtained through the local community manager's office. The work here takes no specific consideration of local building codes, fire ordinances, municipal zoning codes, and items relevant to the federal "Americans with Disabilities Act." Wherever pertinent these regulations always will supercede the intentions of the conceptual proposal illustrated here. Where applicable, all work must be approved by the local Main Street design review committee.



Image 19. Option 4 (Southeast Corner): The stucco or EIFS is similar in color to Pratt & Lambert's "Pebble" paint color (#2282). Large gooseneck downlighting is used to illuminate the signage and south-facing awning. This awning runs the entire length of the facade.



Image 20. Option 4 (South Facade): The signage on the storefront is black, formed plastic, Copperplate font available from Gemini. Performax stone, four feet in height, and stucco or EIFS replace the metal on the south facade. Additionally, aluminum flashing has been added along the top of the parapet wall.



Image 21. Option 4 (East Facade): A new window has been added, as well as a new door with sidelight. A new steel door and overhead door are also shown to the right.



Image 22: Gloss black gooseneck Harbor light (#AL20) by Abolite. 20" diameter.

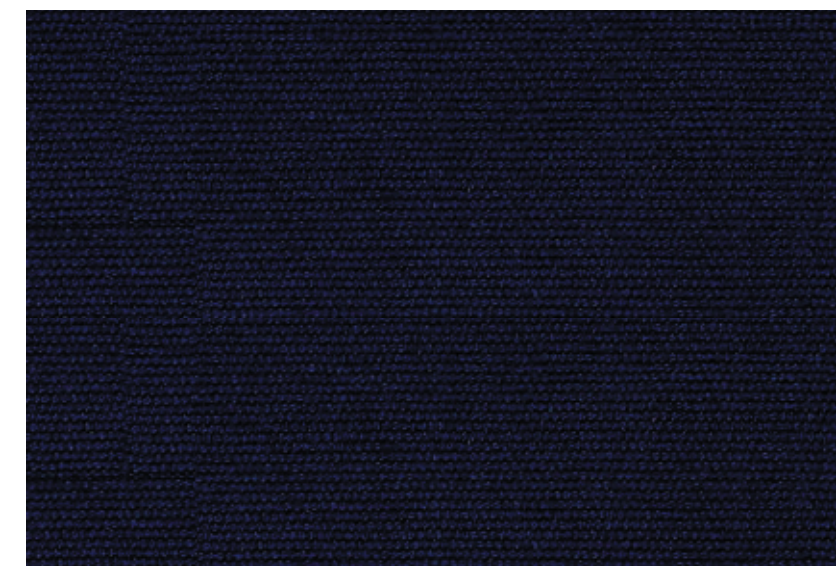


Image 23: "Captain Navy" (#4646) Sunbrella fabric.

created by:
NELMS
 Nebraska Lied
 Main Street
 •
 University of
 Nebraska
 College of
 Architecture

Design assistance for:
**Day & Night
 Plumbing & Heating**
 1400 Jackson Street
 Sidney, NE 69162

Produced under the direction of:
Nebraska Lied Main Street
 P.O. Box 83107
 Lincoln, 68501-3107
 Phone: 402.323.7337 Fax: 402.323.7349

Project Code:
SDY0701
 Date:
25 MAY 2007

Sheet No.:
5 / 7

DISCLAIMER:

The Nebraska Lied Main Street Program provides this nominal charge design assistance to property owners in officially designated Main Street project areas. The renderings and notations on these sheets are only conceptual views of the project site and are based on the information supplied to the design staff. Should obscured architectural details or problems be revealed, the local Main Street manager should be notified and consulted. General notes are provided as a guideline for preservation and revitalization techniques and are generally based on the Secretary of the Department of Interior's Standards for Historic Preservation. A copy of this publication may be viewed at the local project manager's office. For further information regarding incentive tax credits or issues regarding clarification of the Secretary of the Interior's Standards call the Nebraska State Historic Preservation Office of the Nebraska Historical Society. For more detailed technical assistance of product information, the state Main Street office has compiled lists of architects, engineers, preservation consultants, contractors, and product manufacturers who have expressed an interest in the Main Street Program. Since the Nebraska Lied Main Street Program is unable to endorse these entities, it is recommended that the building owners thoroughly check all references before engaging such contacts. These resource lists may be obtained through the local community manager's office. The work here takes no specific consideration of local building codes, fire ordinances, municipal zoning codes, and items relevant to the federal "Americans with Disabilities Act." Wherever pertinent these regulations always will supercede the intentions of the conceptual proposal illustrated here. Where applicable, all work must be approved by the local Main Street design review committee.



Image 24. Option 5 (Southeast Corner): The stucco or EIFS is similar in color to Pratt & Lambert's "Bristol Fog" paint color (#2281). Large, gooseneck downlighting is used to illuminate the signage and south-facing awning. Cylinder downlight fixtures bookend the south facade.



Image 25. Option 5 (South Facade): The signage on the storefront is black, formed plastic, Optima SemiBold font available from Gemini and affixed to a signboard. PerforMAX stone, four feet in height, and stucco or EIFS replace the metal on the south facade. Additionally, aluminum flashing has been added along the top of the parapet wall.



Image 26. Option 5 (East Facade): A new window has been added, as well as a new door with sidelight. A new steel door and overhead door are also shown to the right. The awnings in this option feature a scalloped valance edge.



Image 27: (Left) Painted natural aluminum gooseneck Harbor light (#AL20) by Abolite. 20" diameter. (Right) Gray round wall mount cylinder (#AC13) by Infinity. 13" diameter.

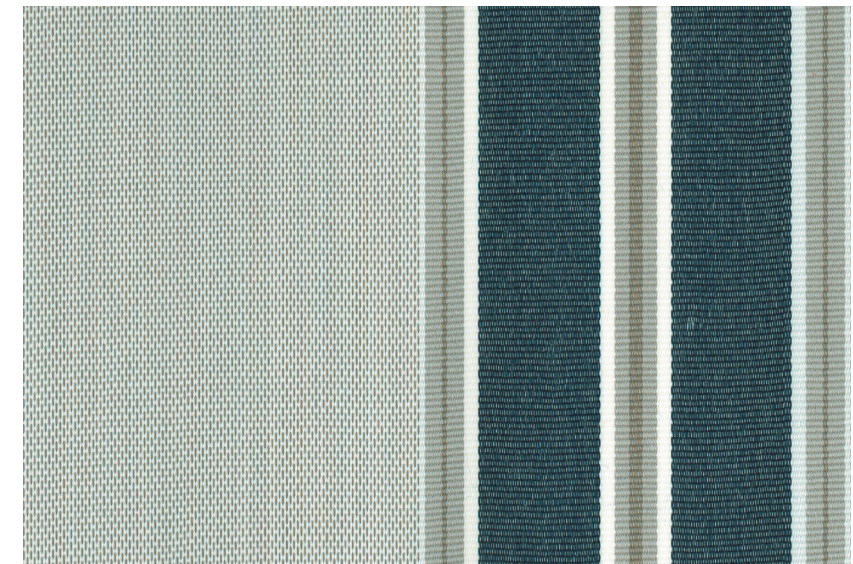
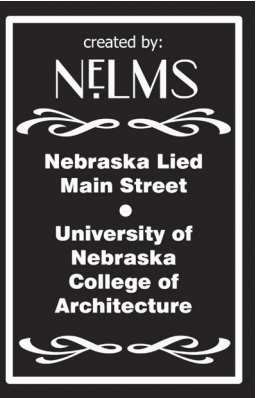


Image 28: "Navy/Taupe Fancy" (#4916) Sunbrella fabric.



Design assistance for:
Day & Night Plumbing & Heating
 1400 Jackson Street
 Sidney, NE 69162

Produced under the direction of:
Nebraska Lied Main Street
 P.O. Box 83107
 Lincoln, 68501-3107
 Phone: 402.323.7337 Fax: 402.323.7349

Project Code:
SDY0701
 Date:
25 MAY 2007

Sheet No.:
6 / 7

DISCLAIMER:

The Nebraska Lied Main Street Program provides this nominal charge design assistance to property owners in officially designated Main Street project areas. The renderings and notations on these sheets are only conceptual views of the project site and are based on the information supplied to the design staff. Should obscured architectural details or problems be revealed, the local Main Street manager should be notified and consulted. General notes are provided as a guideline for preservation and revitalization techniques and are generally based on the Secretary of the Department of Interior's Standards for Historic Preservation. A copy of this publication may be viewed at the local project manager's office. For further information regarding incentive tax credits or issues regarding clarification of the Secretary of the Interior's Standards call the Nebraska State Historic Preservation Office of the Nebraska Historical Society. For more detailed technical assistance of product information, the state Main Street office has compiled lists of architects, engineers, preservation consultants, contractors, and product manufacturers who have expressed an interest in the Main Street Program. Since the Nebraska Lied Main Street Program is unable to endorse these entities, it is recommended that the building owners thoroughly check all references before engaging such contacts. These resource lists may be obtained through the local community manager's office. The work here takes no specific consideration of local building codes, fire ordinances, municipal zoning codes, and items relevant to the federal "Americans with Disabilities Act." Wherever pertinent these regulations always will supercede the intentions of the conceptual proposal illustrated here. Where applicable, all work must be approved by the local Main Street design review committee.



Image 29. Option 1 (South Facade, Alternative Signage): Dark gray (#333333), formed plastic, Cooper Black font available from Gemini.

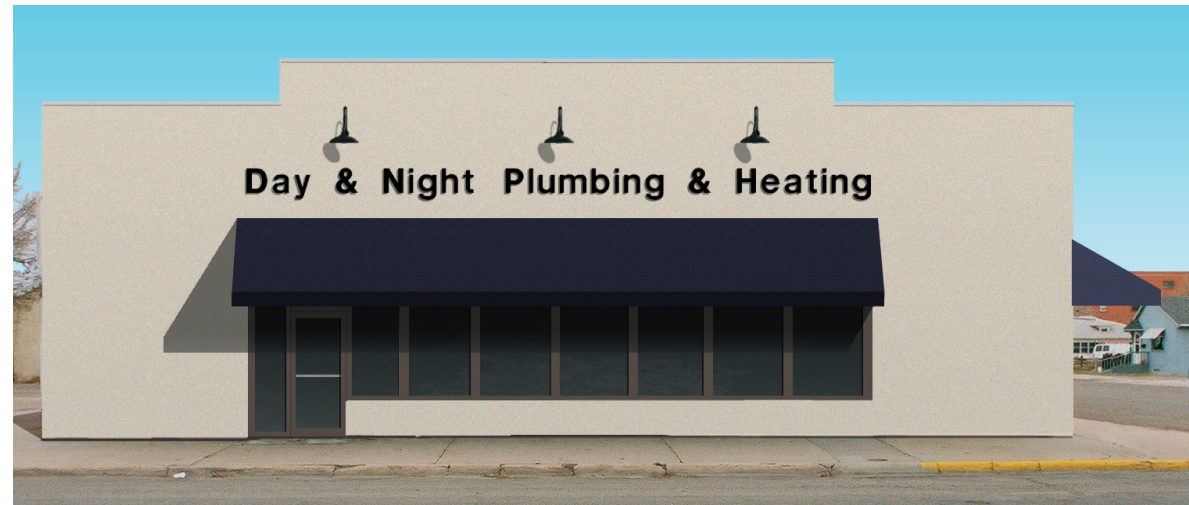


Image 32. Option 3 (South Facade, Alternative Signage): Black, formed plastic, Helvetica font available from Gemini.



Image 30. Option 1 (South Facade, Alternative Signage): Black, formed plastic, Clarion font available from Gemini.



Image 33. Option 3 (South Facade, Alternative Signage): Black, cast metal, Roffe font available from Gemini.



Image 31. Option 1 (South Facade, Alternative Signage): Gray (#999999), formed plastic, Kabel font available from Gemini.



Image 34. Option 3 (South Facade, Alternative Signage): Gray (#999999), cast metal, Futura font available from Gemini.



Design assistance for:
Day & Night Plumbing & Heating
 1400 Jackson Street
 Sidney, NE 69162

Produced under the direction of:
Nebraska Lied Main Street
 P.O. Box 83107
 Lincoln, 68501-3107
 Phone: 402.323.7337 Fax: 402.323.7349

Project Code:
SDY0701
 Date:
25 MAY 2007

Sheet No.:
7 / 7